



COLEGIO DE  
BACHILLERES

# SISTEMA DE GESTIÓN ESCOLAR DE LA EMS: SIGEEMS

## METAS 2010-2011

Noviembre 12, 2010  
v.1.0



INDICADORES POR PRIORIDAD	Logro 2006-2007	Logro 2007-2008	Logro 2008-2009	Logro 2009-2010	Meta 2010-2011
1. Aprobación.	40.12%	42.34%	44.04%	47.00%	<b>51.42%</b>
2. Eficiencia terminal.	39.44%	40.94%	43.17%	47.77%	<b>50.09%</b>
3. Deserción total.		18.05%	17.24%	16.96%	<b>15.68%</b>
4. Promoción.	71.38%	72.11%	75.08%	75.97%	<b>78.04%</b>
5. Alumnos con tutorías.	23.77%	30.63%	38.90%	62.24%	<b>81.67%</b>
6. Actualización del personal docente.	44.21%	53.57%	64.11%	81.55%	<b>92.24%</b>
7. Alumnos por computadora con acceso a Internet.	35.46	28.29	28.04	17.77	<b>13.63</b>
8. Docentes que diseñan secuencias didácticas.	79.91%	86.30%	90.73%	96.01%	<b>97.42%</b>
9. Libros por alumno.	10.31	10.03	10.3	9.42	<b>10.28</b>
10. Utilización de la capacidad física.	89.52%	91.91%	92.82%	104.48%	<b>98.70%</b>
11. Docentes con formación profesional acorde a la asignatura que imparten.	97.74%	98.07%	96.85%	99.65%	<b>100%</b>
12. Alumnos por salón de clases.	42.54	43.04	44.20	49.81	<b>45.55</b>
13. Crecimiento de la matrícula .	-0.45%	2.68%	0.99%	12.57%	<b>-5.53%</b>
14. Alumnos por docente.	19.34	16.73	18.75	20.35	<b>18.43</b>
15. Personal docente titulado (educación superior).	85.01%	86.83%	91.47%	95.65%	<b>97.25%</b>
16. Participación de docentes en planeación curricular.	78.70%	78.33%	84.36%	93.47%	<b>96.57%</b>
17. Docentes por computadora.	20.14	15.03	10.39	8.78	<b>3.30</b>
18. Padres de familia que asistieron a reuniones.		77.15%	82.17%	88.17%	<b>94.01%</b>
19. Docentes frente a grupo.	99.21%	97.43%	99.68%	100.00%	<b>99.92%</b>
20. Aprobación de alumnos por asignatura.		74.02%	73.94%	78.61%	<b>81.83%</b>
21. Costo por alumno.		12416.72	12292.2	13587.1	<b>16313.91</b>
22. Alumnos por grupo.		42.67	42.07	43.69	<b>42.2</b>
23. Atención a la demanda.	100.00%	100.00%	100.00%	100.00%	<b>100.00%</b>

## LOGRO EN CUATRO AÑOS (2006-2007 A 2009-2010)

INDICADORES POR PRIORIDAD	Logro 2006-2007	Logro 2007-2008	Logro 2008-2009	Logro 2009-2010	% crecimiento	Puntos ganados
1. Aprobación.	40.12%	42.34%	44.04%	47.00%	<b>17.15%</b>	<b>6.88</b>
2. Eficiencia terminal.	39.44%	40.94%	43.17%	47.77%	<b>21.12%</b>	<b>8.33</b>
3. Deserción total. *		18.05%	17.24%	16.96%	<b>6.43%</b>	<b>1.09</b>
4. Promoción.	71.38%	72.11%	75.08%	75.97%	<b>6.43%</b>	<b>4.59</b>
5. Alumnos con tutorías.	23.77%	30.63%	38.90%	62.24%	<b>161.84%</b>	<b>38.47</b>
6. Actualización del personal docente.	44.21%	53.57%	64.11%	81.55%	<b>84.46%</b>	<b>37.34</b>
7. Alumnos por computadora con acceso a Internet. *	35.46	28.29	28.04	17.77	<b>99.55%</b>	<b>17.69</b>
8. Docentes que diseñan secuencias didácticas.	79.91%	86.30%	90.73%	96.01%	<b>20.15%</b>	<b>16.10</b>
9. Libros por alumno.	10.31	10.03	10.3	9.42	<b>-8.63%</b>	<b>-0.89</b>
10. Utilización de la capacidad física.	89.52%	91.91%	92.82%	104.48%	<b>16.71%</b>	<b>14.96</b>
11. Docentes con formación profesional acorde a la asignatura que imparten.	97.74%	98.07%	96.85%	99.65%	<b>1.95%</b>	<b>1.91</b>
12. Alumnos por salón de clases. *	42.54	43.04	44.20	49.81	<b>-14.60%</b>	<b>-7.27</b>
13. Crecimiento de la matrícula .	-0.45%	2.68%	0.99%	12.57%	<b>16.72%</b>	<b>13.02</b>
14. Alumnos por docente. *	19.34	16.73	18.75	20.35	<b>-4.96%</b>	<b>-1.01</b>
15. Personal docente titulado (educación superior).	85.01%	86.83%	91.47%	95.65%	<b>12.52%</b>	<b>10.64</b>
16. Participación de docentes en planeación curricular.	78.70%	78.33%	84.36%	93.47%	<b>18.77%</b>	<b>14.77</b>
17. Docentes por computadora. *	20.14	15.03	10.39	8.78	<b>129.38%</b>	<b>11.36</b>
18. Padres de familia que asistieron a reuniones.		77.15%	82.17%	88.17%	<b>14.28%</b>	<b>11.02</b>
19. Docentes frente a grupo.	99.21%	97.43%	99.68%	100.00%	<b>0.80%</b>	<b>0.79</b>
20. Aprobación de alumnos por asignatura.		74.02%	73.94%	78.61%	<b>6.20%</b>	<b>4.59</b>
21. Costo por alumno.		12416.72	12292.2	13587.1	<b>9.43%</b>	<b>1170.38</b>
22. Alumnos por grupo. *		42.67	42.07	43.69	<b>-2.33%</b>	<b>-1.02</b>
23. Atención a la demanda.	100.00%	100.00%	100.00%	100.00%	<b>0.00%</b>	<b>0.00</b>

\* Indicadores de naturaleza decreciente

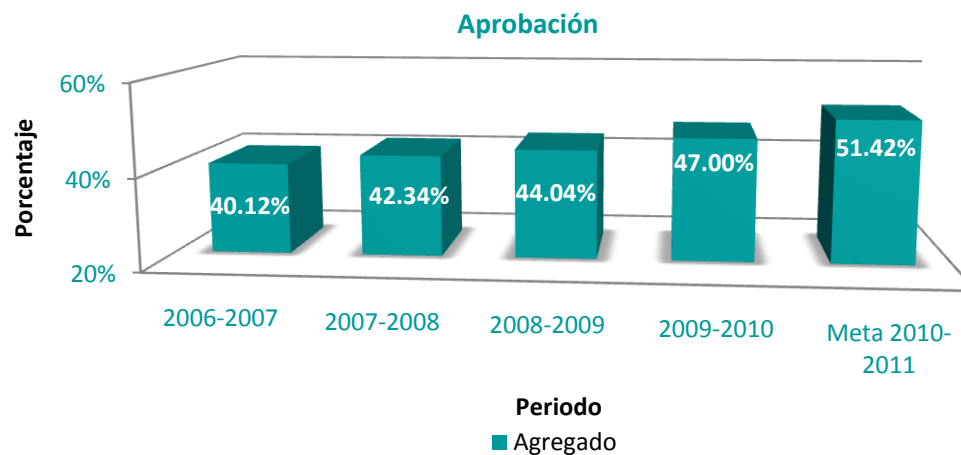
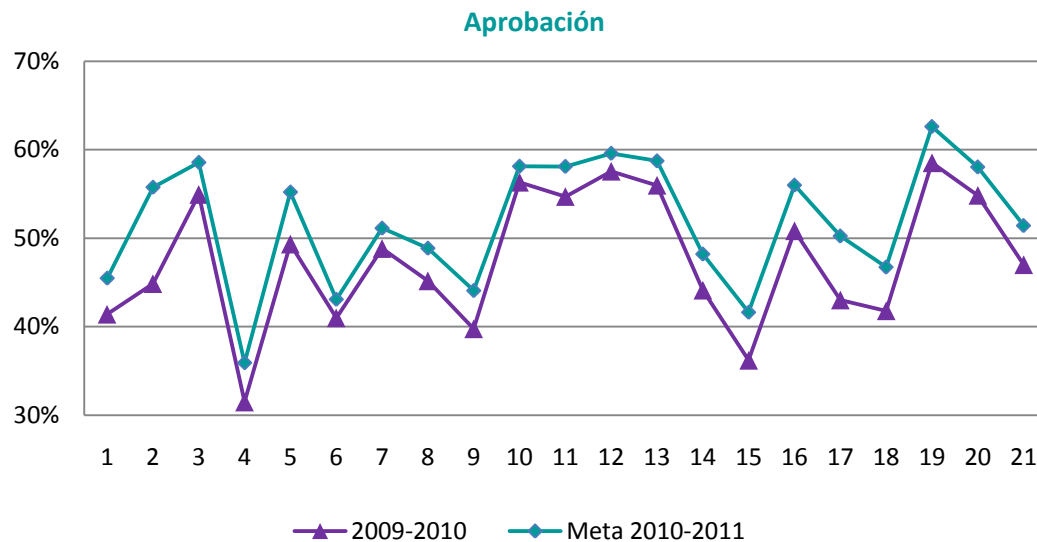


# PRIORIDAD 1

## II.2.2. APROBACIÓN (BRUTA)

Porcentaje de alumnos que han aprobado la totalidad de asignaturas y/o módulos establecidos al final del ciclo escolar.

INDICADOR	$\left(\frac{P_t}{A_t}\right) * 100$						
	Plantel	2006-2007	2007-2008	2008-2009	2009-2010 (A)	Meta 2010-2011 (B)	Porcentaje de incremento 2010-2011 (B - A) / (A)
<b>Global</b>		<b>40.12%</b>	<b>42.34%</b>	<b>44.04%</b>	<b>47.00%</b>	<b>51.42%</b>	<b>9.41%</b>
1		35.19%	39.03%	39.47%	41.40%	45.48%	9.85%
2		38.93%	42.89%	44.37%	44.86%	55.75%	24.28%
3		47.34%	51.33%	49.46%	54.93%	58.56%	6.60%
4		29.48%	28.41%	30.43%	31.49%	35.93%	14.09%
5		46.40%	45.61%	45.60%	49.33%	55.21%	11.91%
6		34.22%	35.03%	36.43%	41.00%	43.09%	5.12%
7		45.47%	45.64%	45.07%	48.82%	51.13%	4.72%
8		39.05%	39.96%	44.42%	45.17%	48.86%	8.17%
9		33.85%	34.72%	36.49%	39.76%	44.08%	10.87%
10		41.48%	43.70%	50.44%	56.31%	58.12%	3.21%
11		40.18%	47.59%	48.96%	54.70%	58.09%	6.21%
12		46.39%	56.32%	56.53%	57.55%	59.58%	3.51%
13		45.54%	48.43%	50.32%	55.97%	58.72%	4.92%
14		34.02%	39.10%	40.84%	44.12%	48.20%	9.25%
15		37.18%	36.46%	38.40%	36.20%	41.63%	14.99%
16		38.36%	39.77%	43.40%	50.83%	55.98%	10.13%
17		39.24%	39.15%	47.21%	43.01%	50.24%	16.80%
18		39.23%	36.81%	40.86%	41.79%	46.73%	11.81%
19		48.45%	55.10%	54.80%	58.51%	62.60%	7.00%
20		47.16%	48.48%	53.42%	54.83%	58.03%	5.84%



El Indicador reporta solamente el calendario B (Ago-Feb).



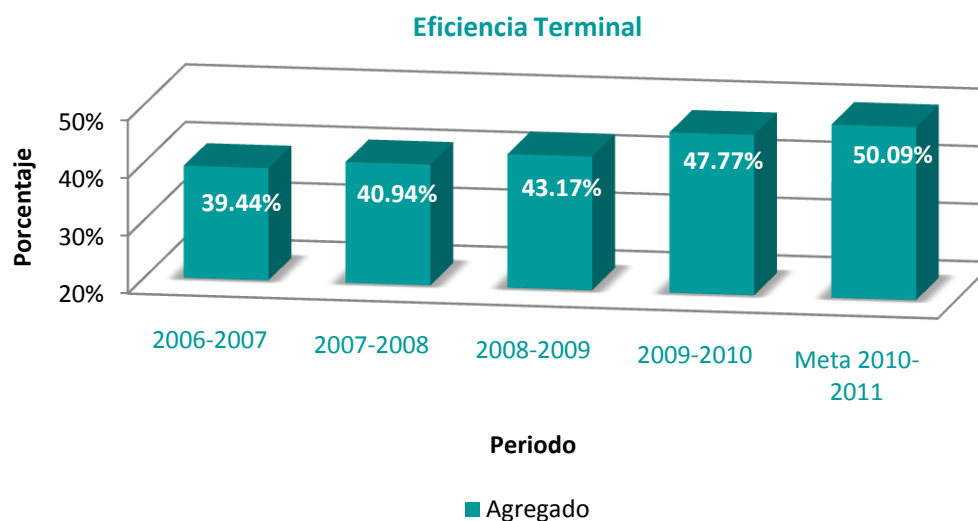
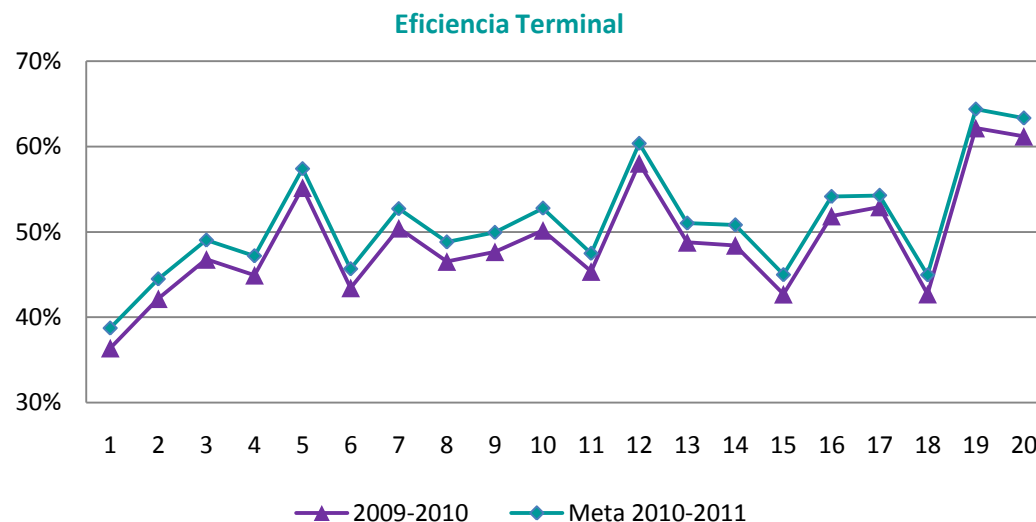
## PRIORIDAD 2

### III.1.1. EFICIENCIA TERMINAL (BRUTA)

Porcentaje de alumnos que terminan el nivel educativo con relación al número de alumnos de primer semestre dos ciclos escolares anteriores.

METAS 2010-2011

INDICADOR	$\left( \frac{Ae_t}{Ani_{t-m}} \right) * 100$					Porcentaje de incremento 2010-2011 (B - A) / (A)
	Plantel	2006-2007	2007-2008	2008-2009	2009-2010 (A)	
<b>Global</b>	<b>39.44%</b>	<b>40.94%</b>	<b>43.17%</b>	<b>47.77%</b>	<b>50.09%</b>	<b>4.85%</b>
1	26.19%	34.26%	33.22%	36.38%	38.73%	6.45%
2	36.84%	31.53%	34.80%	42.18%	44.49%	5.48%
3	37.57%	44.73%	45.32%	46.78%	49.04%	4.82%
4	35.07%	33.09%	35.29%	44.93%	47.19%	5.03%
5	51.12%	47.69%	50.30%	55.19%	57.40%	4.00%
6	42.81%	39.50%	44.23%	43.44%	45.67%	5.14%
7	43.91%	43.92%	43.75%	50.44%	52.71%	4.51%
8	45.74%	40.58%	41.64%	46.53%	48.82%	4.90%
9	29.37%	39.37%	38.44%	47.68%	49.94%	4.74%
10	39.11%	43.68%	48.55%	50.19%	52.78%	5.16%
11	43.96%	44.12%	48.24%	45.36%	47.48%	4.67%
12	45.58%	46.36%	52.49%	58.04%	60.36%	4.00%
13	61.08%	49.15%	45.20%	48.78%	51.02%	4.59%
14	39.75%	34.39%	45.14%	48.43%	50.82%	4.93%
15	37.20%	44.53%	47.60%	42.70%	44.98%	5.34%
16	46.89%	42.12%	46.28%	51.87%	54.14%	4.39%
17	38.53%	38.16%	53.67%	52.93%	54.28%	2.55%
18	38.04%	37.15%	34.32%	42.71%	44.96%	5.27%
19	46.86%	45.28%	48.60%	62.18%	64.38%	3.53%
20	39.74%	57.26%	50.16%	61.21%	63.33%	3.46%



Indicador calculado en base al egreso del calendario 10A y el ingreso del calendario 07B.



## PRIORIDAD 3

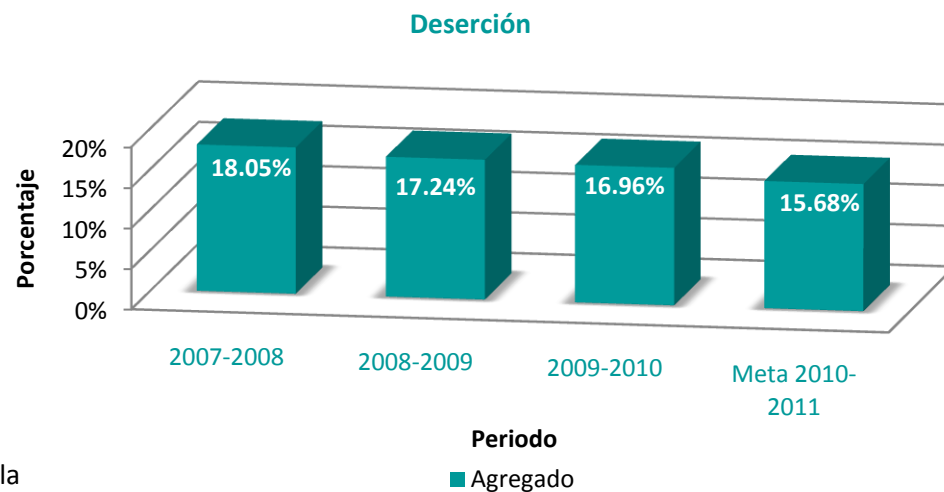
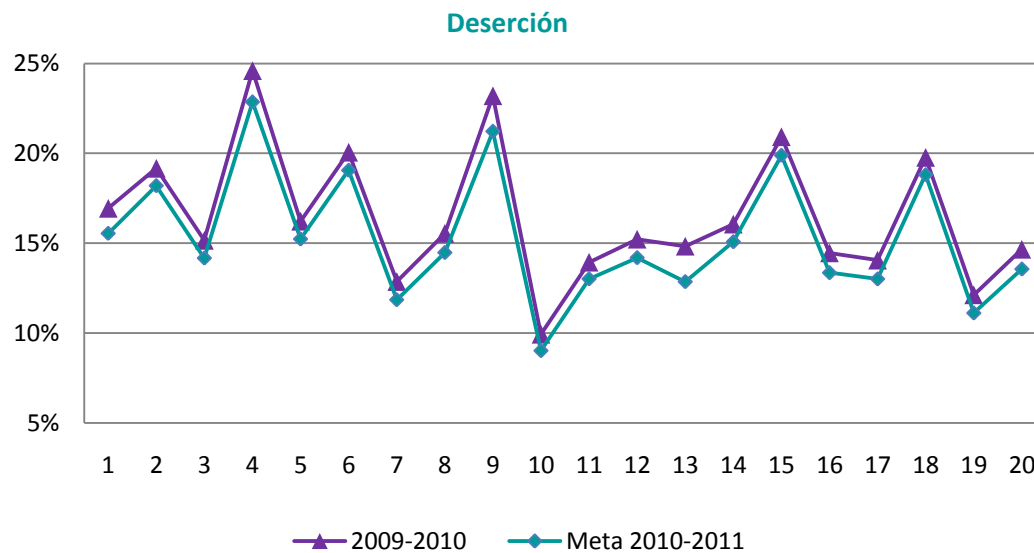
### II.1.1. DESERCIÓN TOTAL\*

Es el porcentaje de alumnos que abandonan las actividades escolares en el ciclo escolar, con respecto a la matrícula de inicio del mismo.

INDICADOR	$\left( 1 - \left[ \frac{A_{t+1} - Anil_{t+1} + Ae_t}{A_t} \right] \right) * 100$						
	Plantel	2006-2007	2007-2008	2008-2009	2009-2010 (A)	Meta 2010-2011 (B)	Porcentaje de incremento 2010-2011 (A-B) / (A)
<b>Global</b>		<b>18.05%</b>	<b>17.24%</b>	<b>16.96%</b>	<b>15.68%</b>	<b>15.68%</b>	<b>7.54%</b>
1			24.02%	27.54%	16.94%	15.54%	8.22%
2			23.50%	17.33%	19.16%	18.20%	5.04%
3			12.00%	16.72%	15.16%	14.17%	6.50%
4			16.85%	15.06%	24.60%	22.86%	7.07%
5			15.13%	11.77%	16.22%	15.23%	6.10%
6			17.94%	19.31%	20.06%	19.06%	5.00%
7			21.34%	18.26%	12.86%	11.85%	7.86%
8			22.15%	18.92%	15.54%	14.48%	6.88%
9			16.57%	21.21%	23.20%	21.23%	8.52%
10			21.72%	11.22%	9.93%	9.02%	9.21%
11			13.02%	17.55%	13.94%	13.01%	6.64%
12			17.36%	19.56%	15.22%	14.19%	6.77%
13			12.08%	20.56%	14.83%	12.86%	13.32%
14			18.15%	13.35%	16.06%	15.08%	6.11%
15			20.40%	16.00%	20.92%	19.89%	4.94%
16			17.95%	13.16%	14.46%	13.35%	7.64%
17			18.89%	10.44%	14.05%	13.01%	7.44%
18			26.21%	19.09%	19.77%	18.81%	4.86%
19			13.11%	11.82%	12.12%	11.11%	8.35%
20			7.83%	14.66%	14.66%	13.56%	7.51%

Para el ciclo escolar 2009-2010 se están considerando alumnos de la modalidad autoplaneada.

\* Indicador de naturaleza decreciente.





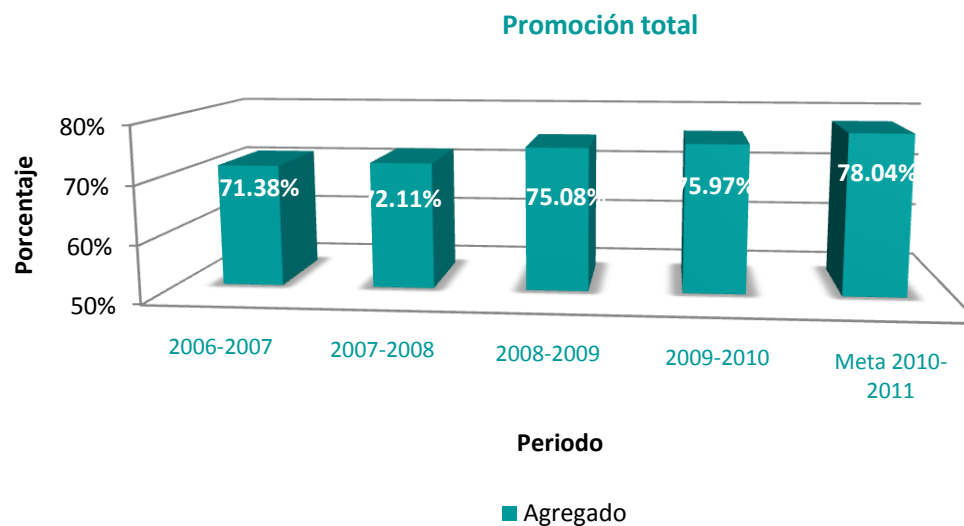
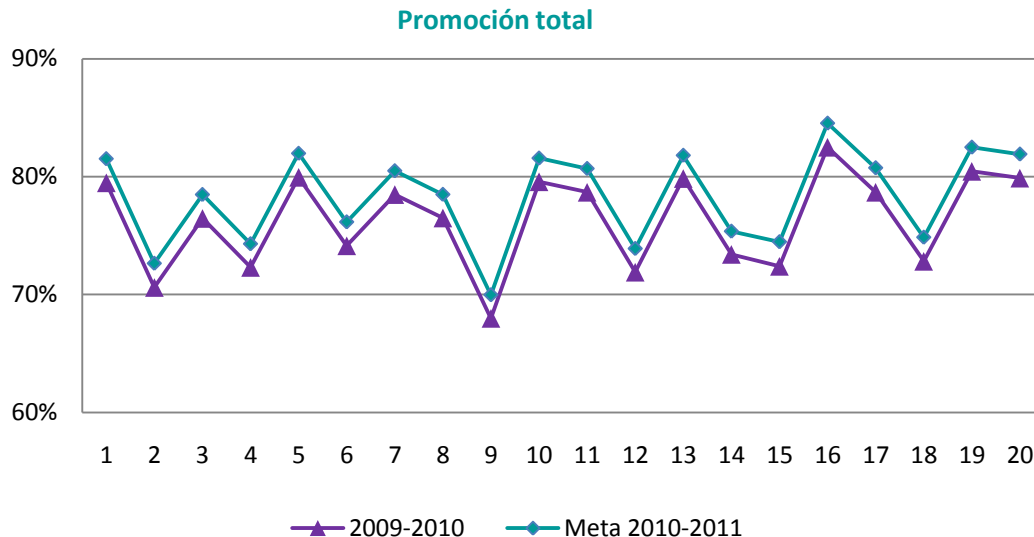
## PRIORIDAD 4

### II.2.1. PROMOCIÓN

Es el porcentaje de alumnos que después de haber acreditado un ciclo escolar están inscritos en el ciclo escolar inmediato superior.

INDICADOR	$\left( \frac{Pc_{t+1}^3 + Pc_{t+1}^5}{Pc_t^1 + Pc_t^3} \right) * 100$					Porcentaje de incremento 2010-2011 (B - A) / (A)
	Plantel	2006-2007	2007-2008	2008-2009	2009-2010 (A)	
<b>Global</b>	<b>71.38%</b>	<b>72.11%</b>	<b>75.08%</b>	<b>75.97%</b>	<b>78.04%</b>	<b>2.72%</b>
1	63.00%	66.90%	64.40%	79.49%	81.52%	2.55%
2	66.03%	64.77%	71.89%	70.61%	72.64%	2.88%
3	66.41%	73.87%	76.62%	76.47%	78.48%	2.63%
4	66.58%	71.44%	78.82%	72.31%	74.30%	2.75%
5	79.46%	75.88%	83.05%	79.96%	81.97%	2.52%
6	74.71%	73.29%	73.18%	74.15%	76.16%	2.71%
7	74.64%	72.14%	73.38%	78.49%	80.49%	2.55%
8	70.62%	71.52%	73.33%	76.51%	78.49%	2.60%
9	69.07%	69.29%	68.62%	67.99%	69.97%	2.92%
10	75.66%	68.57%	76.21%	79.58%	81.57%	2.50%
11	69.89%	75.58%	73.59%	78.69%	80.69%	2.54%
12	72.71%	78.00%	75.55%	71.91%	73.90%	2.77%
13	77.08%	72.31%	76.01%	79.85%	81.81%	2.44%
14	64.71%	76.24%	73.82%	73.42%	75.37%	2.65%
15	73.80%	67.62%	76.14%	72.40%	74.47%	2.86%
16	76.67%	75.38%	83.75%	82.51%	84.53%	2.45%
17	75.21%	77.55%	77.75%	78.69%	80.75%	2.61%
18	71.24%	66.58%	73.32%	72.83%	74.86%	2.78%
19	75.08%	80.44%	83.32%	80.47%	82.50%	2.52%
20	77.44%	79.55%	82.05%	79.89%	81.91%	2.53%

## METAS 2010-2011



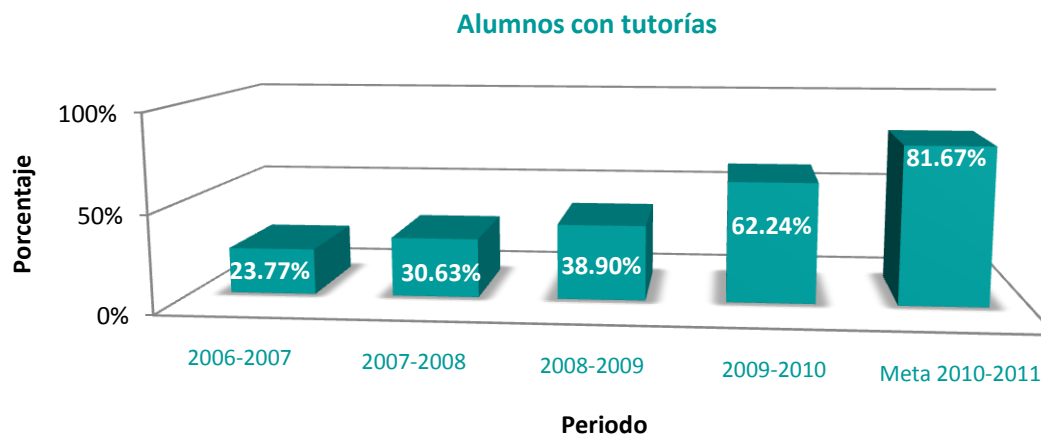
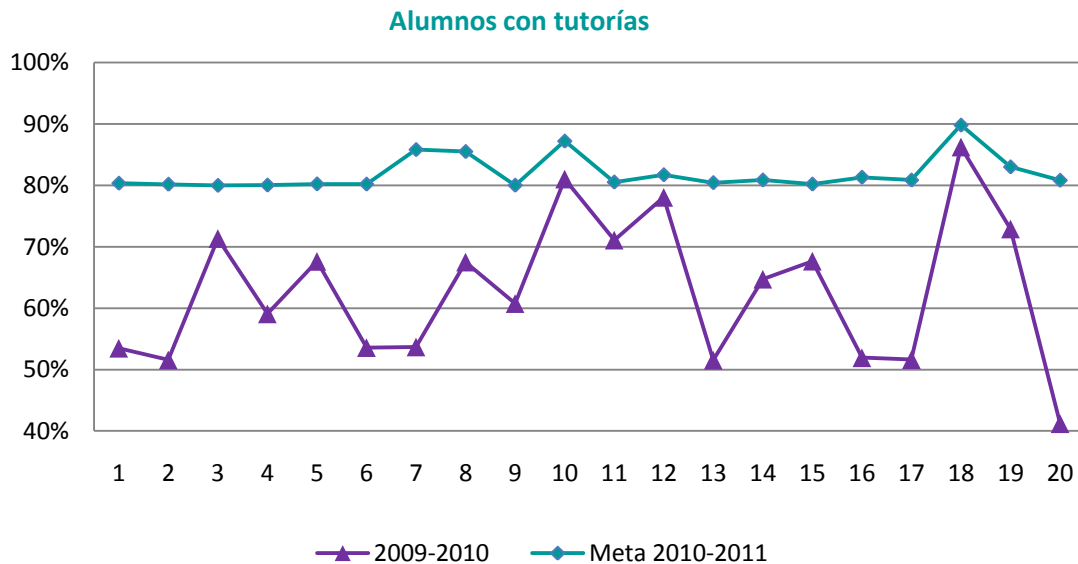
Anteriormente el indicador se calculaba con el calendario B (Ago-Feb), a partir de 2009-2010 se considera a los alumnos del calendario B(Ago-Feb) y A (Mar-Jul).



### II.1.1. ALUMNOS CON TUTORÍAS

Porcentaje de alumnos que reciben tutorías individualizadas.

INDICADOR	$\left( \frac{tut_t}{A_t} \right) * 100$					Porcentaje de incremento 2010-2011 (B - A) / (A)
	Plantel	2006-2007	2007-2008	2008-2009	2009-2010 (A)	
<b>Global</b>	<b>23.77%</b>	<b>30.63%</b>	<b>38.90%</b>	<b>62.24%</b>	<b>81.67%</b>	<b>31.22%</b>
1	38.18%	34.35%	42.59%	53.49%	80.36%	50.24%
2	18.35%	31.93%	38.79%	51.58%	80.19%	55.47%
3	39.61%	46.81%	52.45%	71.35%	80.00%	12.12%
4	37.05%	49.49%	56.03%	59.08%	80.05%	35.49%
5	16.57%	17.18%	26.92%	67.63%	80.24%	18.64%
6	16.88%	19.35%	23.36%	53.59%	80.21%	49.66%
7	14.76%	15.78%	23.96%	53.70%	85.84%	59.86%
8	9.38%	7.93%	31.44%	67.52%	85.52%	26.66%
9	8.99%	15.07%	21.49%	60.76%	80.03%	31.71%
10	10.13%	19.05%	33.50%	81.04%	87.23%	7.64%
11	26.52%	36.08%	43.44%	71.10%	80.55%	13.28%
12	21.42%	25.79%	31.38%	78.06%	81.73%	4.70%
13	38.64%	41.46%	44.04%	51.54%	80.45%	56.07%
14	43.88%	17.97%	37.58%	64.73%	80.88%	24.94%
15	6.21%	59.92%	64.17%	67.67%	80.21%	18.54%
16	33.94%	33.01%	38.22%	51.94%	81.33%	56.60%
17	13.06%	40.72%	47.80%	51.62%	80.87%	56.65%
18	32.86%	20.59%	46.34%	86.26%	89.83%	4.14%
19	16.13%	57.52%	66.92%	72.91%	83.02%	13.87%
20	24.71%	34.71%	37.89%	41.20%	80.83%	96.21%

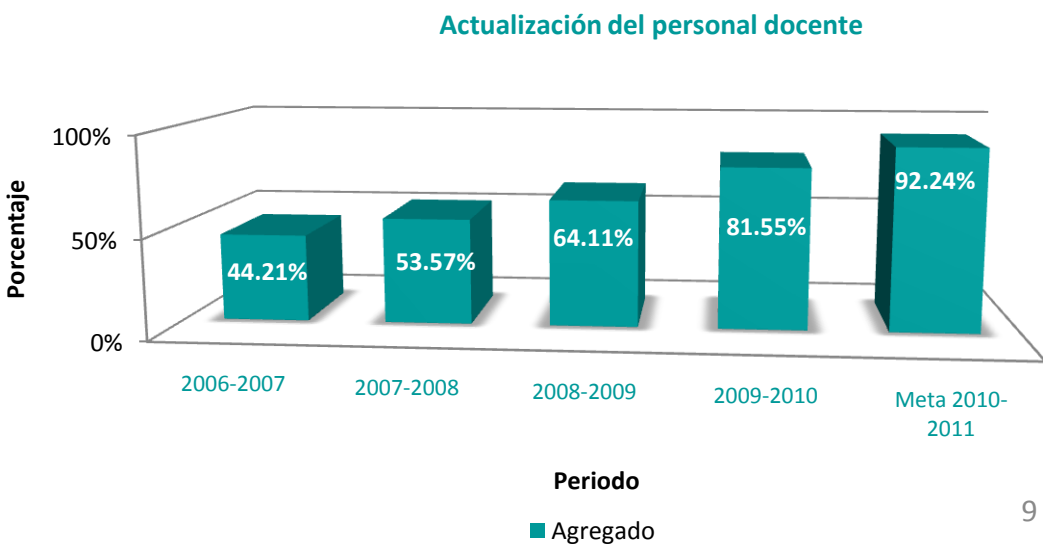
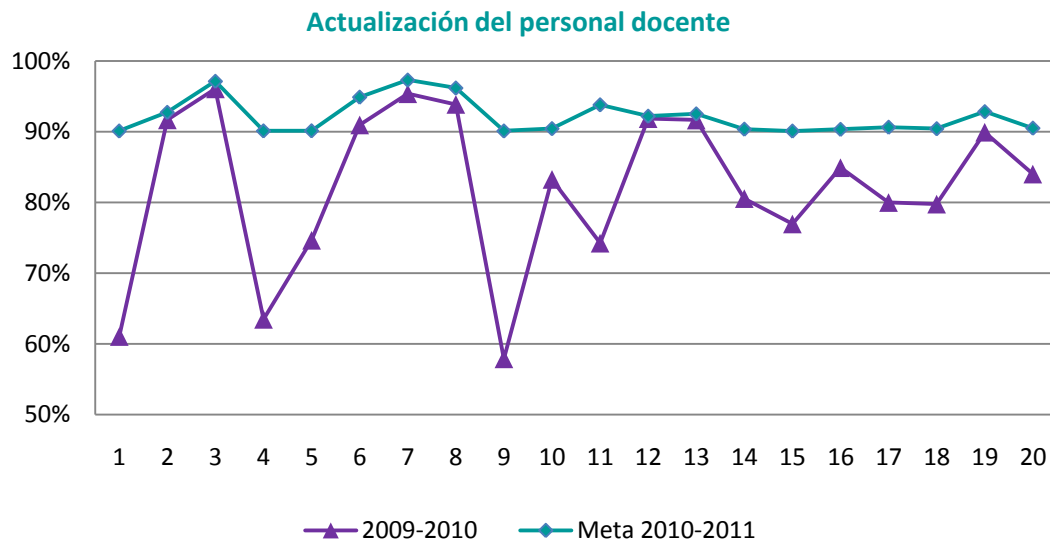




VI.1.5. ACTUALIZACIÓN DEL PERSONAL DOCENTE

Porcentaje de docentes que acreditaron al menos un curso de actualización, afín a sus funciones en el ciclo escolar.

INDICADOR	$\left(\frac{M_t^{act}}{M_t}\right) * 100$				Meta 2010-2011 (B)	Porcentaje de incremento 2010-2011 (B - A) / (A)
	Plantel	2006-2007	2007-2008	2008-2009		
<b>Global</b>	<b>44.21%</b>	<b>53.57%</b>	<b>64.11%</b>	<b>81.55%</b>	<b>92.24%</b>	<b>13.11</b>
1	45.95%	41.23%	51.50%	61.05%	90.13%	47.62%
2	65.73%	53.80%	64.36%	91.69%	92.76%	1.17%
3	29.81%	75.45%	80.00%	96.07%	97.16%	1.13%
4	32.82%	56.19%	58.94%	63.48%	90.14%	42.00%
5	63.90%	55.56%	67.42%	74.66%	90.16%	20.76%
6	74.25%	79.64%	87.94%	90.97%	94.92%	4.34%
7	30.18%	42.70%	57.88%	95.38%	97.33%	2.04%
8	30.67%	51.67%	81.15%	93.88%	96.20%	2.48%
9	35.68%	26.59%	40.39%	57.89%	90.13%	55.68%
10	26.51%	49.23%	53.97%	83.27%	90.46%	8.63%
11	36.97%	59.41%	66.46%	74.25%	93.83%	26.36%
12	80.80%	89.58%	91.63%	91.86%	92.22%	0.39%
13	38.67%	47.11%	48.54%	91.67%	92.54%	0.96%
14	15.53%	27.34%	36.64%	80.56%	90.38%	12.20%
15	27.16%	40.18%	75.16%	76.97%	90.12%	17.08%
16	62.07%	63.41%	82.71%	84.92%	90.36%	6.39%
17	26.83%	53.80%	61.35%	80.00%	90.66%	13.32%
18	44.64%	35.63%	41.57%	79.78%	90.45%	13.38%
19	69.03%	72.62%	81.94%	89.94%	92.86%	3.24%
20	34.84%	49.01%	53.51%	84.02%	90.53%	7.75%

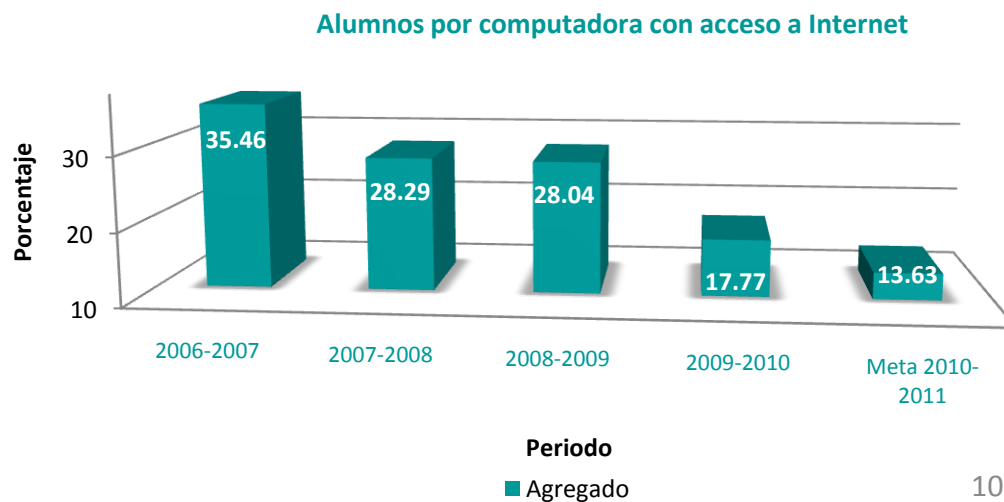
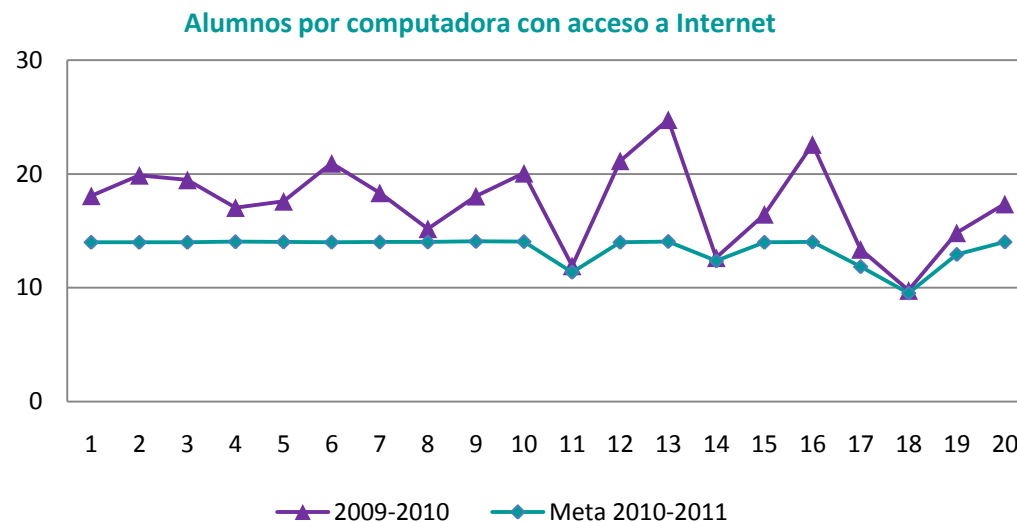




### II.1.1. ALUMNOS POR COMPUTADORA CON ACCESO A INTERNET\*

Número de alumnos por computadora para uso educativo con acceso a Internet en el ciclo escolar.

INDICADOR	$\frac{A_t}{CO^{ia}}$					
	Plantel	2006-2007	2007-2008	2008-2009	2009-2010 (A)	Meta 2010-2011 (B)
<b>Global</b>	<b>35.46</b>	<b>28.29</b>	<b>28.04</b>	<b>17.77</b>	<b>13.63</b>	<b>23.32</b>
1	40.77	29.45	30.36	18.09	14.01	22.59%
2	42.10	29.82	29.22	19.89	14.00	29.62%
3	43.72	34.19	36.15	19.49	14.00	28.15%
4	47.79	39.23	29.34	17.06	14.05	17.62%
5	25.27	28.86	26.31	17.61	14.03	20.31%
6	64.50	44.96	44.81	20.94	14.01	33.09%
7	43.74	29.10	32.83	18.35	14.02	23.58%
8	59.15	25.10	24.86	15.19	14.03	7.66%
9	43.27	30.60	32.04	18.06	14.08	22.06%
10	44.62	28.90	28.60	20.07	14.06	29.94%
11	19.02	17.90	19.51	11.93	11.37	4.76%
12	48.56	28.71	29.95	21.16	14.00	33.83%
13	29.86	32.52	33.70	24.78	14.07	43.20%
14	30.08	13.68	13.78	12.65	12.36	2.27%
15	21.74	22.31	22.07	16.47	14.00	14.98%
16	26.30	24.14	29.97	22.60	14.03	37.94%
17	14.56	15.32	15.51	13.38	11.86	11.40%
18	21.62	19.16	15.79	9.78	9.52	2.57%
19	30.43	25.87	21.16	14.84	12.93	12.83%
20	31.13	28.18	33.70	17.37	14.04	19.19%



\* Indicador de naturaleza decreciente.



## PRIORIDAD 8

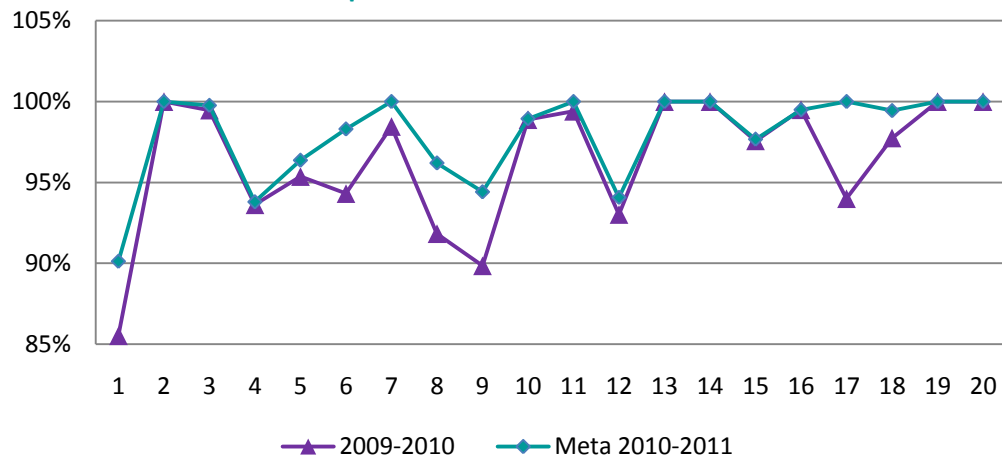
### VII.1.2. DOCENTES QUE DISEÑAN SECUENCIAS DIDÁCTICAS

Porcentaje de docentes que presentaron el diseño de la secuencia didáctica de sus asignaturas al inicio del ciclo escolar.

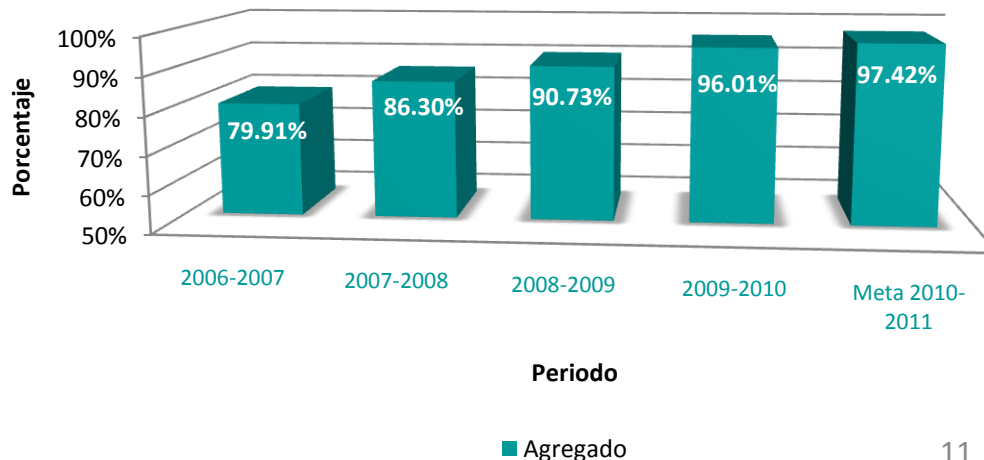
INDICADOR	$\left( \frac{M_d}{M^{doc}_t} \right) * 100$						
	Plantel	2006-2007	2007-2008	2008-2009	2009-2010 (A)	Meta 2010-2011 (B)	Porcentaje de incremento 2010-2011 (B - A) / (A)
<b>Global</b>		<b>79.91%</b>	<b>86.30%</b>	<b>90.73%</b>	<b>96.01%</b>	<b>97.42%</b>	<b>1.47%</b>
1		71.10%	83.33%	80.65%	85.53%	90.13%	5.38%
2		79.75%	82.95%	85.64%	100.00%	100.00%	0.00%
3		65.31%	94.38%	96.62%	99.48%	99.76%	0.29%
4		90.09%	91.09%	91.62%	93.62%	93.80%	0.19%
5		90.42%	87.26%	92.76%	95.37%	96.37%	1.05%
6		83.96%	85.09%	90.43%	94.31%	98.31%	4.23%
7		68.73%	73.72%	85.35%	98.46%	100.00%	1.56%
8		73.33%	55.00%	68.85%	91.84%	96.20%	4.75%
9		81.08%	80.35%	87.06%	89.85%	94.42%	5.09%
10		94.78%	97.31%	98.41%	98.88%	98.94%	0.06%
11		88.24%	82.35%	100.00%	99.40%	100.00%	0.60%
12		80.80%	91.67%	92.83%	93.02%	94.07%	1.13%
13		86.00%	100.00%	100.00%	100.00%	100.00%	0.00%
14		75.34%	97.66%	100.00%	100.00%	100.00%	0.00%
15		64.20%	66.96%	97.39%	97.58%	97.67%	0.10%
16		98.28%	100.00%	87.97%	99.50%	99.49%	-0.01%
17		67.68%	80.95%	90.73%	94.00%	100.00%	6.38%
18		81.55%	100.00%	95.09%	97.75%	99.44%	1.72%
19		92.90%	95.24%	100.00%	100.00%	100.00%	0.00%
20		80.00%	76.16%	78.38%	100.00%	100.00%	0.00%

## METAS 2010-2011

Docentes que diseñan secuencias didácticas



Docentes que diseñan secuencia didácticas

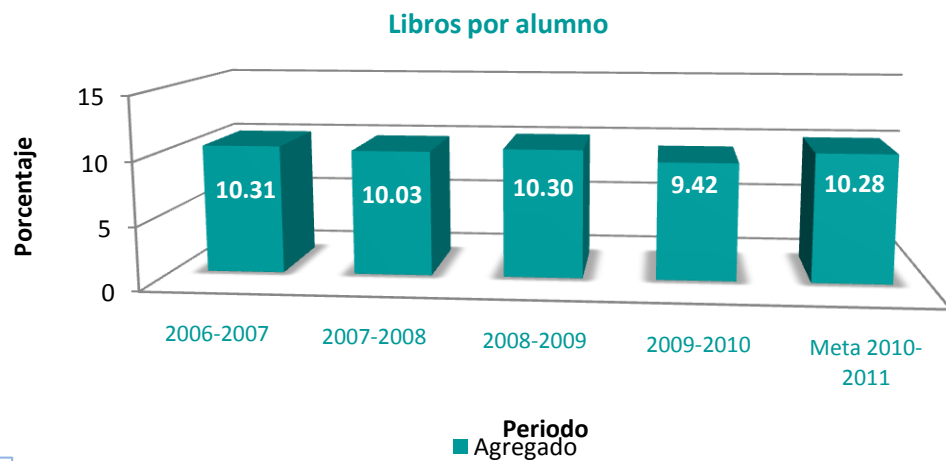
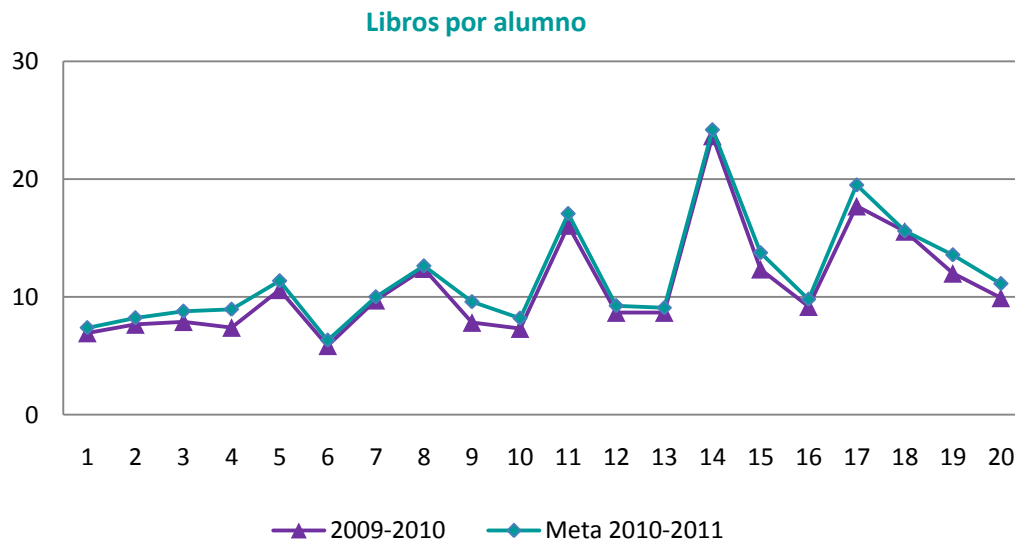




V.2.10. LIBROS POR ALUMNO

Número de libros por alumno en el área de biblioteca al inicio del ciclo escolar.

INDICADOR	$\frac{lib_t}{A_t}$					Meta 2010-2011 (B)	Porcentaje de incremento 2010-2011 (B - A) / (A)
	Plantel	2006-2007	2007-2008	2008-2009	2009-2010 (A)		
<b>Global</b>	<b>10.31</b>	<b>10.03</b>	<b>10.30</b>	<b>9.42</b>	<b>10.28</b>	<b>9.15</b>	
1	7.71	7.27	7.43	6.94	7.38	6.38%	
2	7.96	8.12	8.56	7.66	8.22	7.29%	
3	8.16	8.39	8.19	7.89	8.79	11.30%	
4	7.36	7.63	7.76	7.41	8.95	20.79%	
5	12.48	11.91	12.11	10.61	11.36	7.13%	
6	6.38	5.98	6.13	5.86	6.32	7.99%	
7	10.85	10.11	11.04	9.72	10.00	2.90%	
8	13.40	12.88	13.59	12.40	12.63	1.86%	
9	8.57	8.50	8.38	7.83	9.59	22.48%	
10	8.31	7.62	8.03	7.31	8.19	11.97%	
11	17.02	18.17	17.48	16.07	17.07	6.27%	
12	8.87	9.58	9.65	8.68	9.25	6.62%	
13	9.97	9.15	9.24	8.68	9.07	4.58%	
14	24.80	27.74	28.50	23.67	24.19	2.23%	
15	13.33	12.99	13.45	12.35	13.75	11.31%	
16	13.35	9.82	10.32	9.18	9.80	6.78%	
17	19.83	18.90	19.40	17.71	19.50	10.14%	
18	15.07	15.55	17.79	15.56	15.60	0.25%	
19	12.94	12.83	13.32	12.00	13.57	13.11%	
20	11.57	10.84	10.62	9.92	11.13	12.21%	



La disminución del indicador obedece al incremento abrupto de la matrícula en agosto, y la adquisición no alcanzó a compensar la relación.

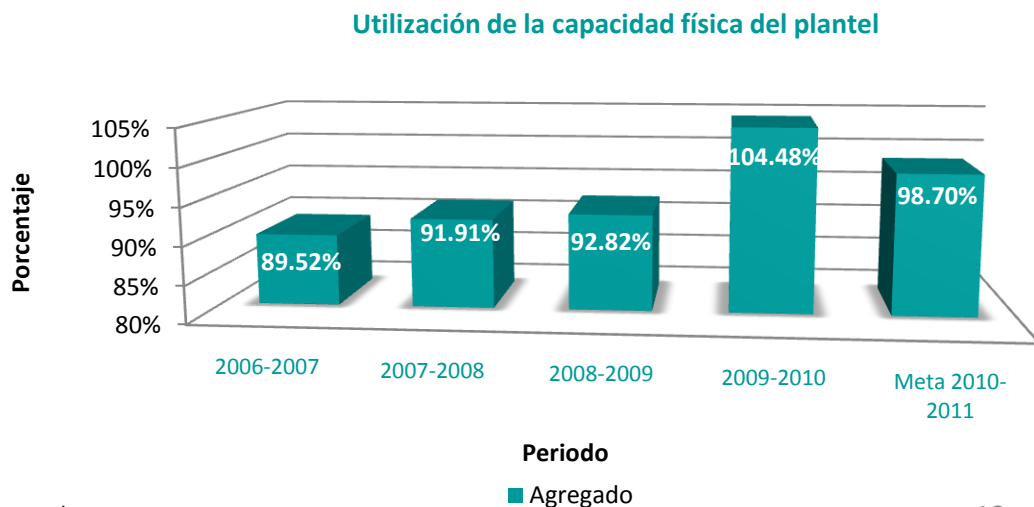
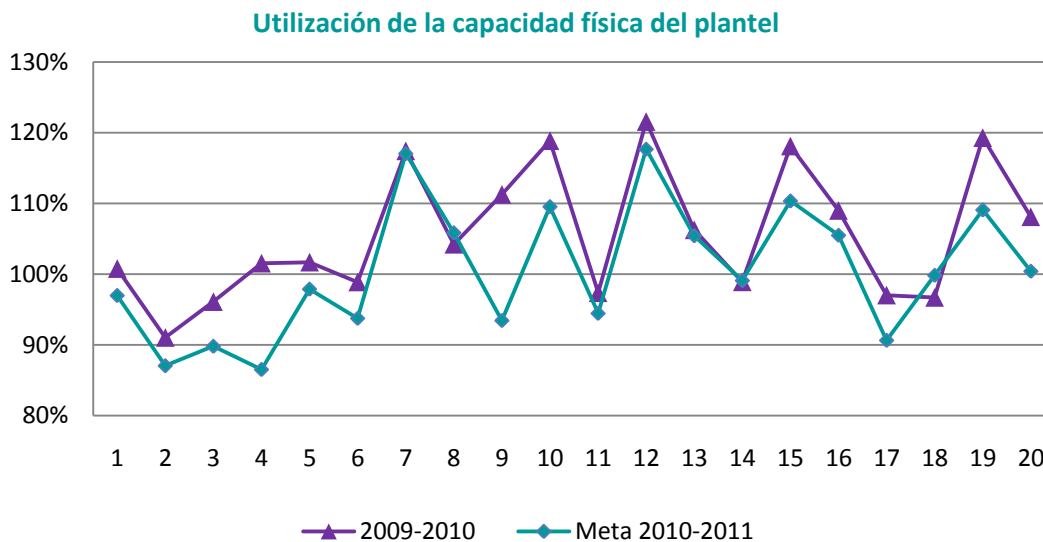


## PRIORIDAD 10

### 1.2.1. UTILIZACIÓN DE LA CAPACIDAD FÍSICA DEL PLANTEL

Porcentaje de utilización de la capacidad física instalada del plantel educativo con relación a la matrícula inicial en el ciclo escolar .

INDICADOR	$\left(\frac{A_t}{C_t}\right) * 100$						
	Plantel	2006-2007	2007-2008	2008-2009	2009-2010 (A)	Meta 2010-2011 (B)	Porcentaje de incremento 2010-2011 (B - A) / (A)
<b>Global</b>		<b>89.52%</b>	<b>91.91%</b>	<b>92.82%</b>	<b>104.48%</b>	<b>98.70%</b>	<b>-5.53%</b>
1		84.40%	89.55%	90.79%	100.79%	97.00%	-3.77%
2		80.64%	80.11%	78.49%	91.05%	87.07%	-4.37%
3		87.16%	84.76%	89.62%	96.12%	89.82%	-6.55%
4		91.59%	91.22%	93.74%	101.56%	86.53%	-14.80%
5		83.30%	87.77%	88.07%	101.70%	97.90%	-3.73%
6		82.65%	88.55%	87.20%	98.90%	93.77%	-5.18%
7		99.11%	106.44%	101.79%	117.45%	117.07%	-0.32%
8		90.20%	93.79%	92.87%	104.23%	105.87%	1.57%
9		92.88%	93.66%	99.34%	111.29%	93.46%	-16.02%
10		95.79%	104.53%	103.48%	118.88%	109.56%	-7.84%
11		82.65%	80.52%	87.76%	97.37%	94.47%	-2.98%
12		113.88%	105.49%	107.68%	121.59%	117.69%	-3.21%
13		86.41%	94.11%	97.52%	106.28%	105.45%	-0.78%
14		89.31%	79.86%	80.46%	98.91%	99.11%	0.20%
15		102.84%	105.52%	106.15%	118.13%	110.37%	-6.57%
16		84.58%	95.66%	94.66%	109.02%	105.51%	-3.21%
17		81.47%	85.77%	86.83%	97.04%	90.66%	-6.58%
18		90.99%	90.55%	82.76%	96.71%	99.85%	3.24%
19		103.15%	104.02%	105.08%	119.31%	109.11%	-8.56%
20		86.87%	92.77%	98.86%	108.12%	100.43%	-7.11%



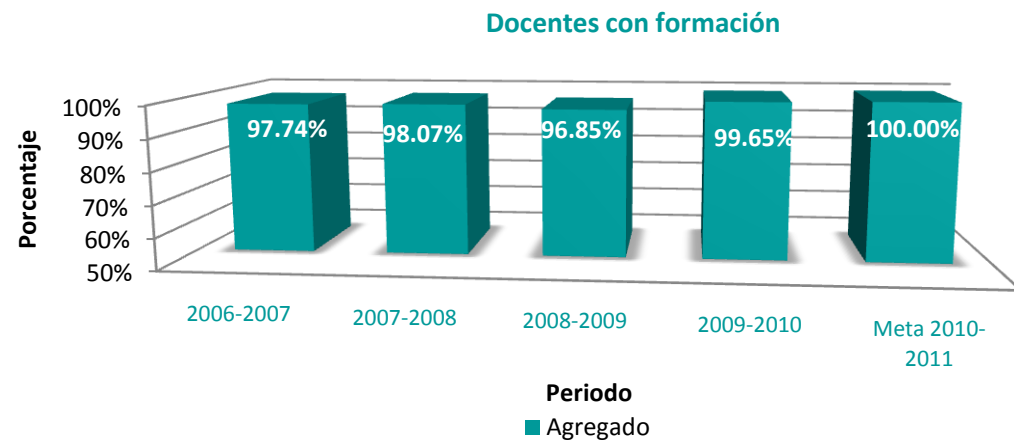
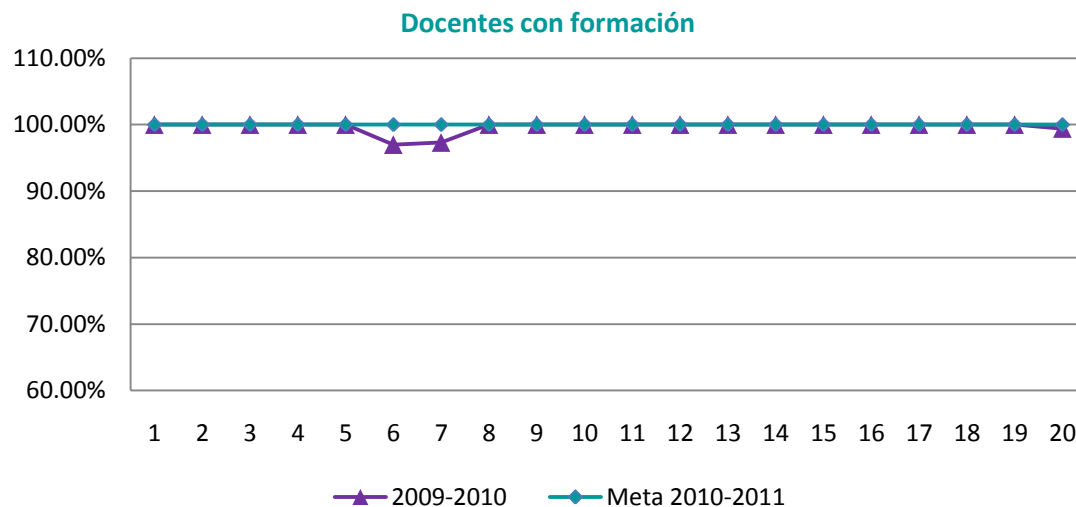
La capacidad física del plantel se calculó en base al número de grupos (2,226) registrados en el Modelo Operativo del CB, multiplicado por 43 alumnos.



### VI.1.6. DOCENTES CON FORMACIÓN PROFESIONAL ACORDE A LA ASIGNATURA QUE IMPARTEN.

Porcentaje de docentes con formación profesional acorde a la asignatura que imparten.

INDICADOR	$\left(\frac{M_t^c}{M_t^{doc}}\right) * 100$					Meta 2010-2011 (B)	Porcentaje de incremento 2010-2011 (B - A) / (A)
	Plantel	2006-2007	2007-2008	2008-2009	2009-2010 (A)		
<b>Global</b>	<b>97.74%</b>	<b>98.07%</b>	<b>96.85%</b>	<b>99.65%</b>	<b>100.00%</b>	<b>0.35%</b>	
1	99.42%	99.42%	100.00%	100.00%	100.00%	0.00%	
2	100.00%	100.00%	87.29%	100.00%	100.00%	0.00%	
3	93.50%	99.78%	97.23%	100.00%	100.00%	0.00%	
4	100.00%	100.00%	100.00%	100.00%	100.00%	0.00%	
5	99.36%	100.00%	100.00%	100.00%	100.00%	0.00%	
6	92.54%	92.73%	93.26%	96.99%	100.00%	3.10%	
7	96.36%	97.08%	97.80%	97.31%	100.00%	2.77%	
8	97.33%	93.33%	93.44%	100.00%	100.00%	0.00%	
9	98.92%	90.94%	90.98%	100.00%	100.00%	0.00%	
10	99.60%	99.62%	95.24%	100.00%	100.00%	0.00%	
11	99.16%	98.82%	94.30%	100.00%	100.00%	0.00%	
12	90.18%	100.00%	100.00%	100.00%	100.00%	0.00%	
13	96.00%	100.00%	100.00%	100.00%	100.00%	0.00%	
14	100.00%	100.00%	100.00%	100.00%	100.00%	0.00%	
15	100.00%	100.00%	100.00%	100.00%	100.00%	0.00%	
16	100.00%	99.19%	99.25%	100.00%	100.00%	0.00%	
17	100.00%	100.00%	96.03%	100.00%	100.00%	0.00%	
18	100.00%	100.00%	100.00%	100.00%	100.00%	0.00%	
19	99.35%	100.00%	100.00%	100.00%	100.00%	0.00%	
20	96.77%	94.04%	94.59%	99.41%	100.00%	0.60%	





# PRIORIDAD 12

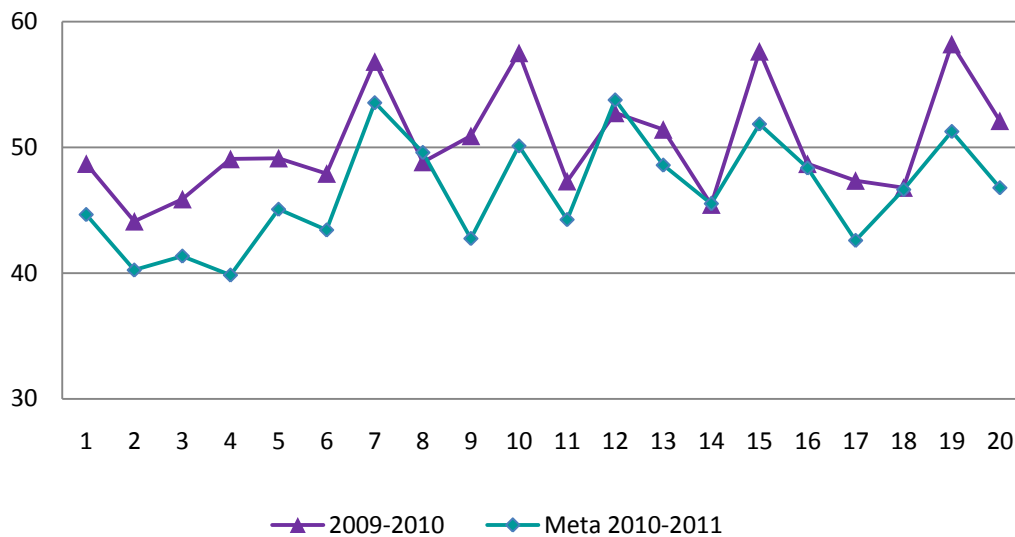
COLEGIO DE BACHILLERES

## IV.2.1. ALUMNOS POR SALÓN DE CLASE\*

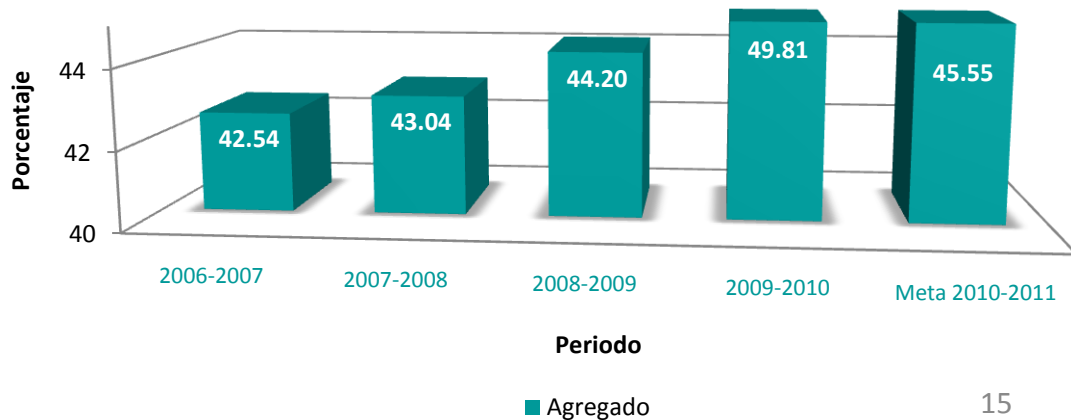
Promedio de alumnos por aula de clases al inicio del ciclo escolar.

INDICADOR	$\frac{A_t}{sa_t}$						
	Plantel	2006-2007	2007-2008	2008-2009	2009-2010 (A)	Meta 2010-2011 (B)	Porcentaje de incremento 2010-2011 (A-B) / (A)
<b>Global</b>		<b>42.54</b>	<b>43.04</b>	<b>44.20</b>	<b>49.81</b>	<b>45.55</b>	<b>8.54%</b>
1		40.77	43.26	43.86	48.69	44.65	8.29%
2		41.04	37.45	38.02	44.10	40.24	8.77%
3		41.59	40.45	42.77	45.87	41.35	9.85%
4		40.73	40.56	45.28	49.06	39.84	18.81%
5		40.24	42.40	42.54	49.13	45.07	8.26%
6		40.50	42.89	42.24	47.90	43.42	9.35%
7		47.94	51.49	49.24	56.82	53.55	5.76%
8		45.50	47.31	46.85	48.82	49.59	-1.57%
9		44.08	40.62	43.09	50.90	42.75	16.02%
10		46.34	50.57	50.06	57.51	50.11	12.87%
11		40.15	39.11	42.63	47.30	44.25	6.44%
12		49.38	41.52	46.69	52.73	53.77	-1.97%
13		42.87	46.69	47.18	51.41	48.58	5.50%
14		37.60	33.63	36.95	45.43	45.52	-0.20%
15		44.98	51.48	51.79	57.63	51.85	10.03%
16		37.77	42.72	42.27	48.68	48.36	0.67%
17		38.28	41.85	42.37	47.35	42.59	10.04%
18		44.02	43.80	40.04	46.79	46.64	0.32%
19		50.33	50.75	51.27	58.21	51.26	11.94%
20		41.86	44.71	47.64	52.10	46.78	10.21%

Alumnos por salón de clase



Alumnos por salón de clase



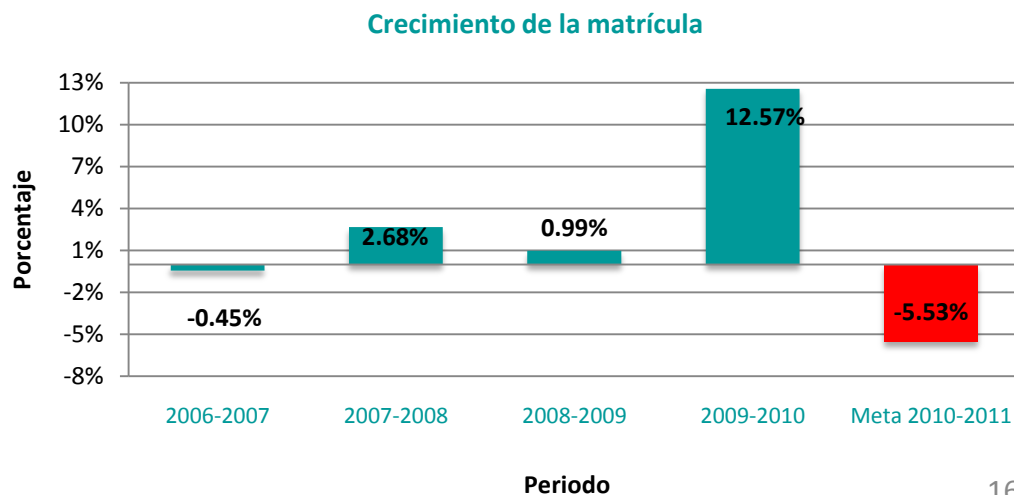
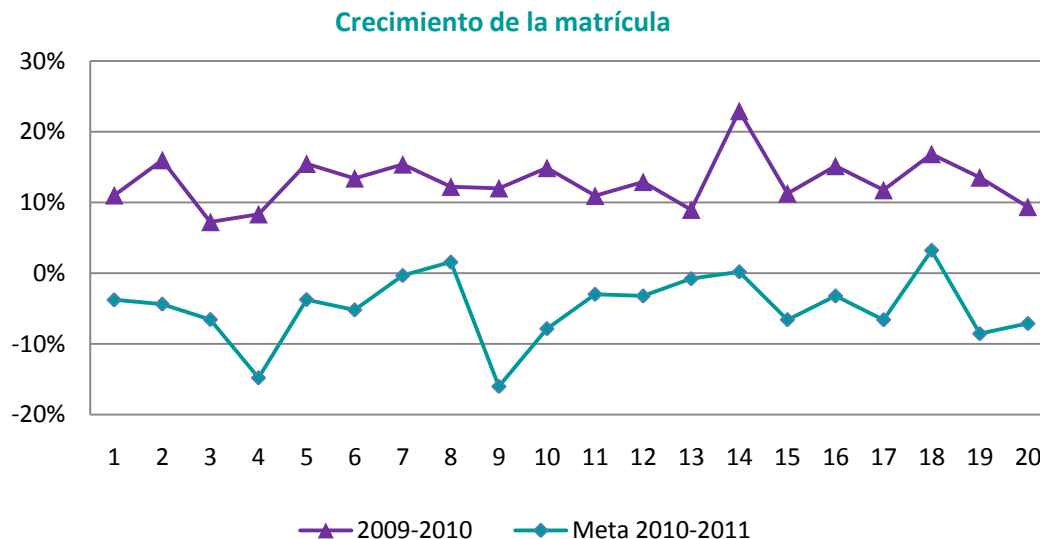
\* Indicador de naturaleza decreciente.



### 1.1.1. CRECIMIENTO DE LA MATRÍCULA

Variación porcentual de alumnos matriculados con relación al ciclo escolar inmediato anterior.

INDICADOR	$\left[ \left( \frac{A_t}{A_{t-1}} \right) - 1 \right] * 100$					
	Plantel	2006-2007	2007-2008	2008-2009	2009-2010 (A)	Meta 2010-2011 (B)
<b>Global</b>		<b>-0.45%</b>	<b>2.68%</b>	<b>0.99%</b>	<b>12.57%</b>	<b>-5.53%</b>
1		-0.21%	6.10%	1.38%	11.02%	-3.77%
2		-1.11%	-0.65%	-2.03%	16.00%	-4.37%
3		-4.97%	-2.76%	5.74%	7.24%	-6.55%
4		1.33%	-0.40%	2.76%	8.34%	-14.80%
5		-6.70%	5.37%	0.33%	15.48%	-3.73%
6		13.16%	7.13%	-1.53%	13.42%	-5.18%
7		-3.48%	7.40%	-4.37%	15.39%	-0.32%
8		-1.83%	3.97%	-0.98%	12.23%	1.57%
9		-7.26%	0.83%	6.07%	12.02%	-16.02%
10		5.22%	9.13%	-1.01%	14.89%	-7.84%
11		0.84%	-2.58%	9.00%	10.95%	-2.98%
12		-5.85%	-7.36%	2.07%	12.92%	-3.21%
13		12.74%	8.91%	3.62%	8.98%	-0.78%
14		-5.10%	-10.58%	0.74%	22.94%	0.20%
15		-6.55%	2.61%	0.60%	11.29%	-6.57%
16		5.29%	13.10%	-1.05%	15.17%	-3.21%
17		-3.19%	5.27%	1.24%	11.76%	-6.58%
18		2.79%	-0.49%	-8.60%	16.86%	3.24%
19		2.55%	0.84%	1.02%	13.54%	-8.56%
20		0.33%	6.80%	6.56%	9.37%	-7.11%

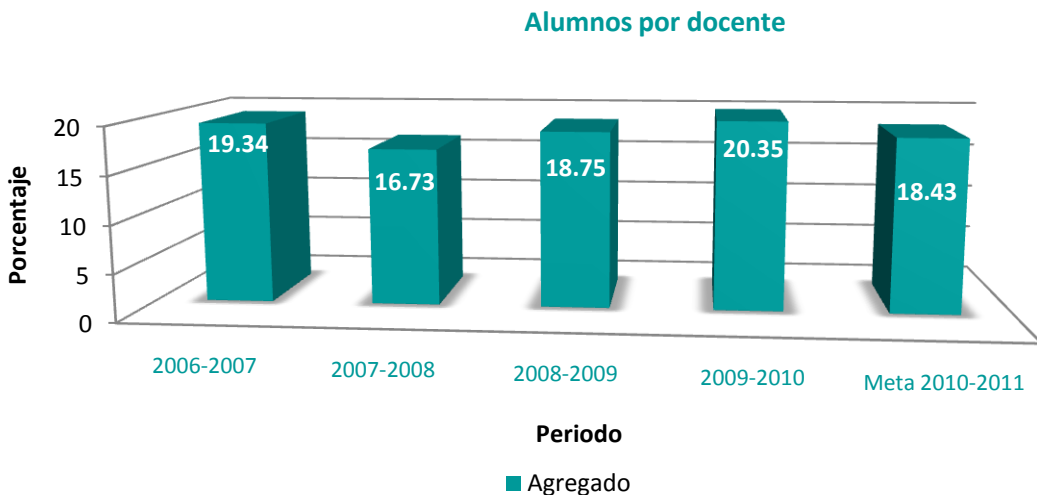
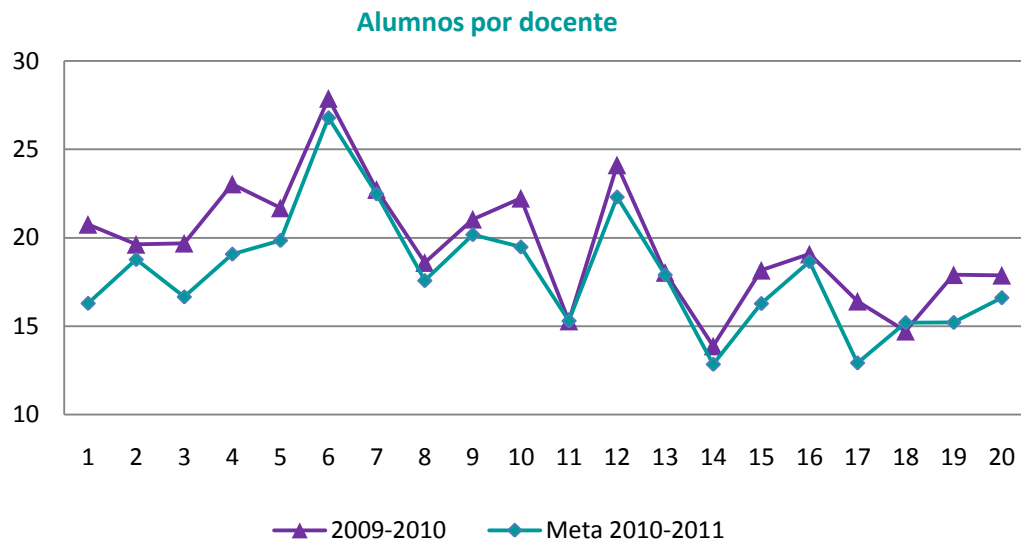




II.4.1. ALUMNOS POR DOCENTE\*

Promedio de alumnos por docente en el plantel al inicio del ciclo escolar.

INDICADOR	$\frac{A_t}{M_t}$					Porcentaje de increment o 2010-2011 (A-B) / (A)
	Plantel	2006-2007	2007-08	2008-2009	2009-2010 (A)	
<b>Global</b>	<b>19.34</b>	<b>16.73</b>	<b>18.75</b>	<b>20.35</b>	<b>18.43</b>	<b>9.40%</b>
1	19.09	20.49	19.36	20.76	16.29	21.53%
2	20.20	17.51	17.43	19.63	18.77	4.37%
3	18.49	13.24	21.58	19.69	16.66	15.41%
4	22.19	17.67	20.49	23.04	19.08	17.20%
5	20.83	16.24	15.59	21.69	19.85	8.47%
6	25.99	27.14	26.06	27.88	26.79	3.90%
7	18.13	19.54	18.76	22.73	22.48	1.08%
8	15.77	20.50	19.97	18.60	17.58	5.50%
9	25.26	9.08	19.60	21.05	20.18	4.13%
10	19.35	20.23	20.66	22.23	19.48	12.40%
11	18.22	12.42	14.57	15.29	15.30	-0.02%
12	26.01	22.49	21.95	24.12	22.30	7.52%
13	22.29	16.19	18.32	18.04	17.90	0.78%
14	8.24	12.61	12.41	13.88	12.84	7.51%
15	16.10	11.95	17.60	18.16	16.28	10.38%
16	25.40	27.09	24.79	19.08	18.65	2.23%
17	12.60	12.73	13.52	16.41	12.92	21.28%
18	14.67	14.10	13.51	14.72	15.20	-3.24%
19	16.88	15.71	17.20	17.91	15.21	15.09%
20	15.66	17.17	14.94	17.88	16.61	7.11%



\* Indicador de naturaleza decreciente.

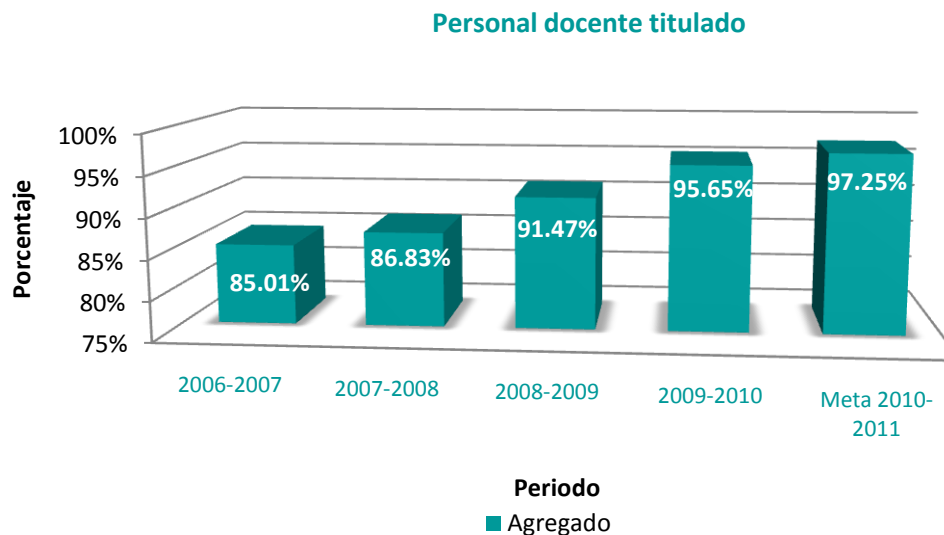
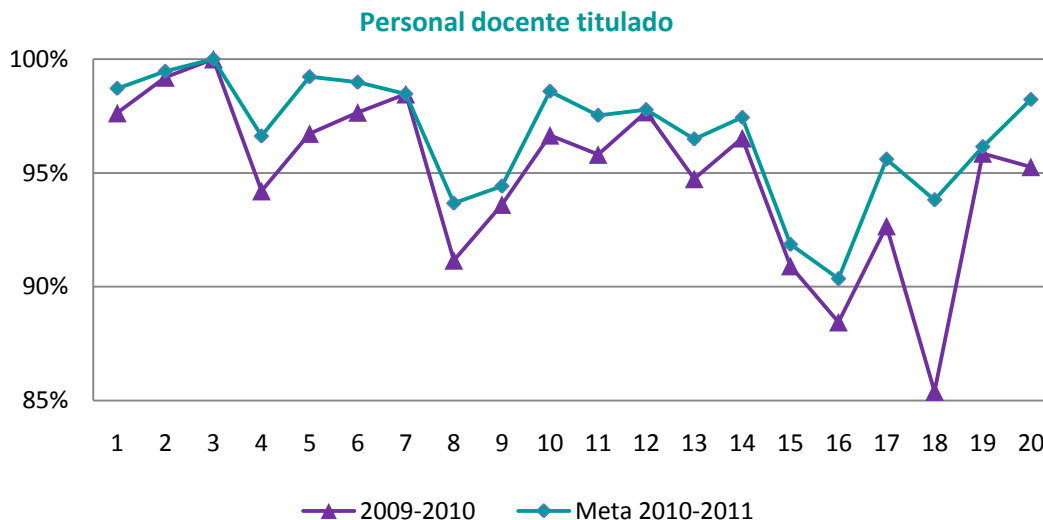


# PRIORIDAD 15

## VI.1.2. PERSONAL DOCENTE TITULADO (EDUCACIÓN SUPERIOR)

Porcentaje de docentes titulados a nivel licenciatura al inicio del ciclo escolar.

INDICADOR	$\left( \frac{M^s_t}{M_t} \right) * 100$						
	Plantel	2006-2007	2007-2008	2008-2009	2009-2010 (A)	Meta 2010-2011 (B)	Porcentaje de incremento 2010-2011 (B - A) / (A)
<b>Global</b>		<b>85.01%</b>	<b>86.83%</b>	<b>91.47%</b>	<b>95.65%</b>	<b>97.25%</b>	<b>1.68%</b>
1		77.17%	86.84%	96.73%	97.63%	98.71%	1.11%
2		88.16%	87.50%	90.61%	99.20%	99.46%	0.27%
3		82.38%	96.01%	95.69%	100.00%	100.00%	0.00%
4		85.76%	91.83%	92.74%	94.20%	96.62%	2.57%
5		92.97%	91.96%	93.21%	96.73%	99.22%	2.58%
6		91.04%	91.27%	96.10%	97.66%	98.98%	1.36%
7		92.36%	95.62%	97.44%	98.46%	98.47%	0.01%
8		70.00%	55.83%	82.79%	91.16%	93.67%	2.76%
9		88.11%	82.66%	90.98%	93.61%	94.42%	0.87%
10		90.36%	88.46%	90.48%	96.65%	98.59%	2.00%
11		91.60%	86.47%	91.77%	95.81%	97.53%	1.80%
12		89.29%	95.83%	96.41%	97.67%	97.78%	0.11%
13		90.67%	88.89%	89.81%	94.74%	96.49%	1.85%
14		73.97%	89.06%	91.60%	96.53%	97.44%	0.94%
15		80.25%	58.04%	81.05%	90.91%	91.86%	1.05%
16		88.79%	77.24%	81.95%	88.44%	90.36%	2.16%
17		79.88%	85.38%	84.66%	92.67%	95.60%	3.17%
18		76.79%	80.46%	80.72%	85.39%	93.82%	9.87%
19		83.23%	83.33%	91.61%	95.86%	96.15%	0.31%
20		80.65%	83.44%	86.49%	95.27%	98.22%	3.11%

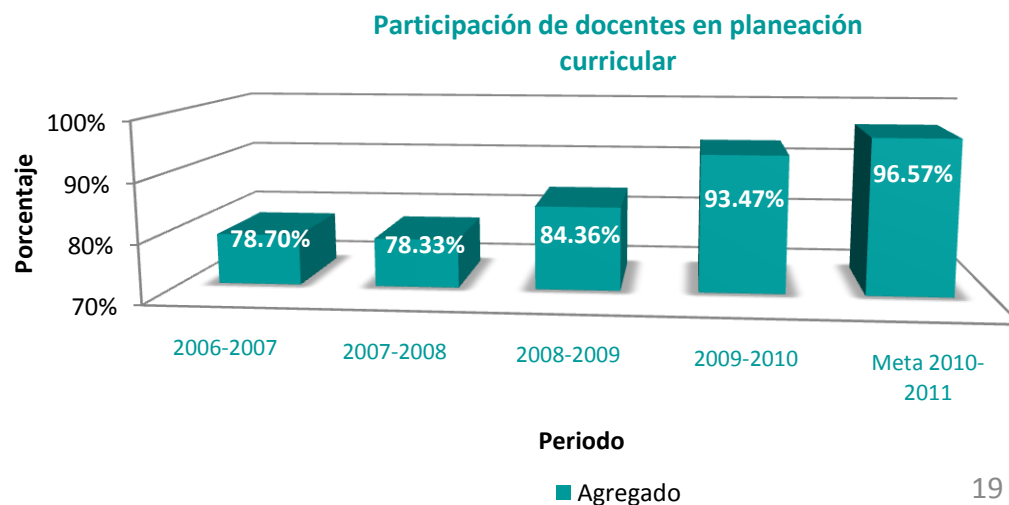
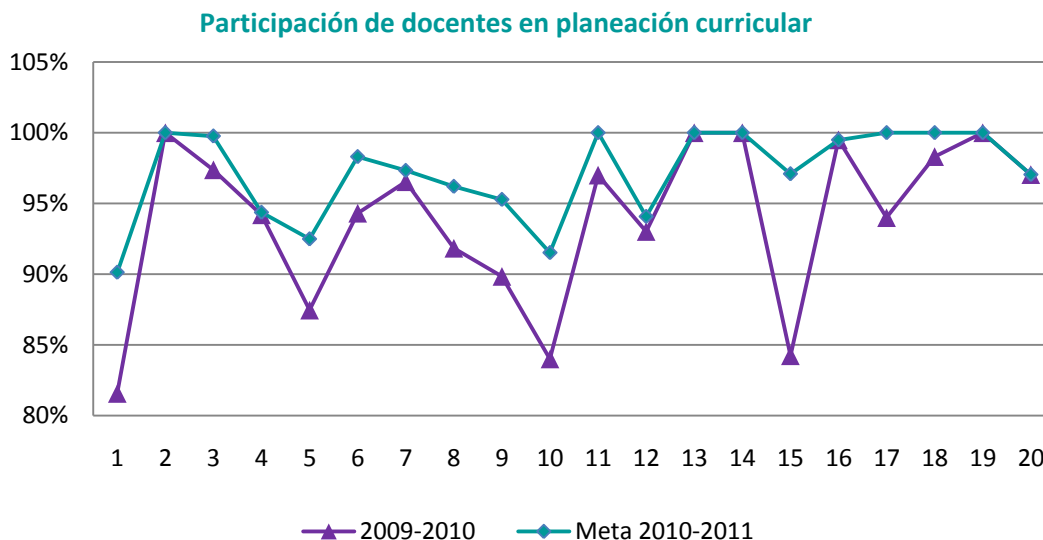




### VII.1.1. PARTICIPACIÓN DE DOCENTES EN PLANEACIÓN CURRICULAR

Porcentaje de docentes que participa en actividades de planeación curricular en el ciclo escolar.

INDICADOR	$\left(\frac{M^{pl}}{M_t}\right) * 100$						
	Plantel	2006-2007	2007-2008	2008-2009	2009-2010 (A)	Meta 2010-2011 (B)	Porcentaje de incremento 2010-2011 (B - A) / (A)
<b>Global</b>		<b>78.70%</b>	<b>78.33%</b>	<b>84.36%</b>	<b>93.47%</b>	<b>96.57%</b>	<b>3.31%</b>
1		71.10%	74.85%	76.84%	81.58%	90.13%	10.48%
2		79.75%	76.63%	85.36%	100.00%	100.00%	0.00%
3		69.11%	79.84%	87.69%	97.38%	99.76%	2.44%
4		90.09%	91.09%	91.62%	94.20%	94.37%	0.17%
5		91.05%	61.47%	69.00%	87.47%	92.49%	5.74%
6		83.96%	85.09%	90.43%	94.31%	98.31%	4.23%
7		68.73%	73.72%	85.35%	96.54%	97.33%	0.82%
8		84.67%	58.33%	64.75%	91.84%	96.20%	4.75%
9		81.08%	55.49%	70.20%	89.85%	95.28%	6.04%
10		75.10%	80.00%	82.14%	84.01%	91.52%	8.93%
11		88.24%	81.18%	100.00%	97.01%	100.00%	3.09%
12		80.80%	91.67%	92.83%	93.02%	94.07%	1.13%
13		86.00%	100.00%	100.00%	100.00%	100.00%	0.00%
14		75.34%	97.66%	99.24%	100.00%	100.00%	0.00%
15		64.20%	66.96%	71.24%	84.24%	97.09%	15.25%
16		98.28%	100.00%	93.23%	99.50%	99.49%	-0.01%
17		67.68%	77.19%	84.05%	94.00%	100.00%	6.38%
18		69.05%	100.00%	87.95%	98.31%	100.00%	1.71%
19		81.94%	89.88%	95.48%	100.00%	100.00%	0.00%
20		80.00%	75.50%	78.38%	97.04%	97.04%	0.00%





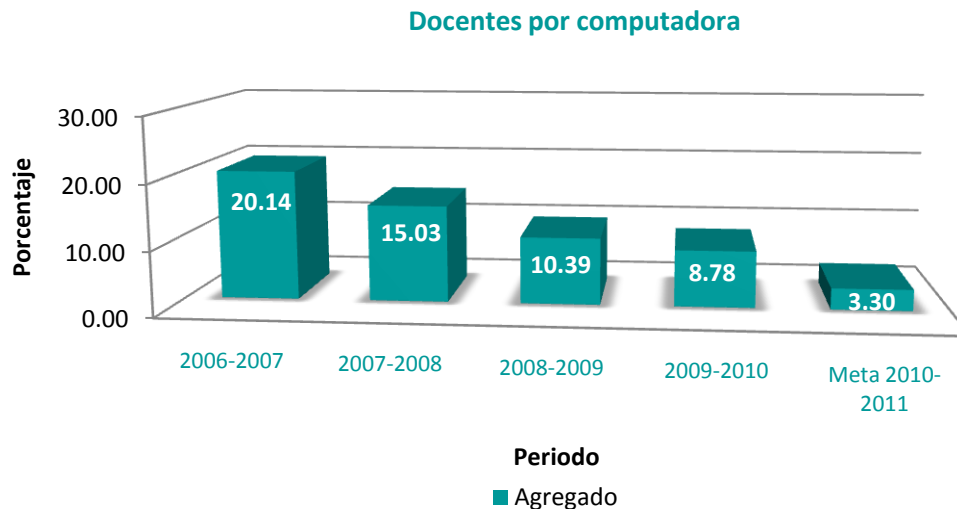
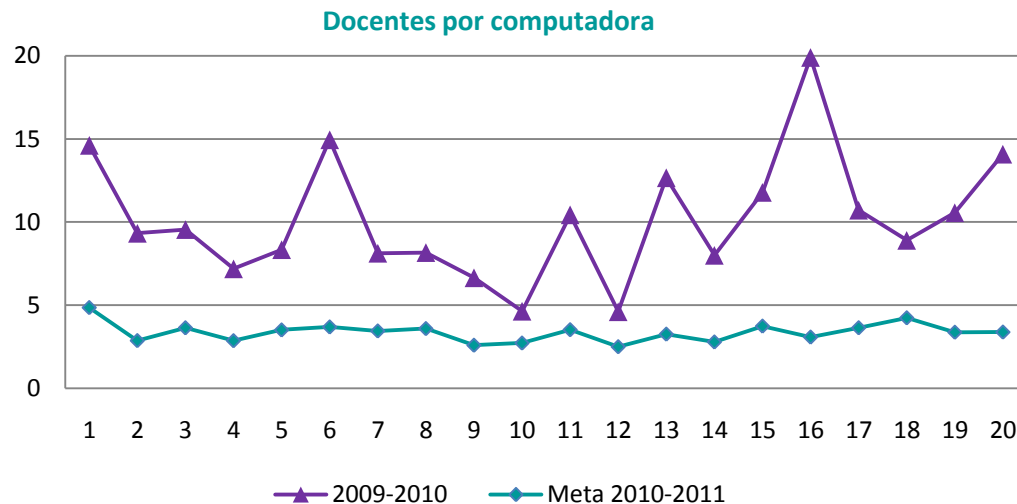
V.1.3. DOCENTES POR COMPUTADORA\*

Número de docentes por computadora (para uso exclusivo de ellos) con acceso a Internet en el ciclo escolar.

INDICADOR	$\frac{M_t}{coi^m}$					
	Plantel	2006-2007	2007-2008	2008-2009	2009-2010 (A)	Meta 2010-2011 (B)
<b>Global</b>	<b>20.14</b>	<b>15.03</b>	<b>10.39</b>	<b>8.78</b>	<b>3.30</b>	<b>62.44%</b>
1	S/C	13.15	14.12	14.62	4.85	66.79%
2	8.03	9.20	9.05	9.33	2.87	69.23%
3	9.71	12.53	8.13	9.55	3.64	61.91%
4	8.08	10.10	7.46	7.19	2.86	60.17%
5	13.04	14.10	10.05	8.34	3.51	57.93%
6	S/C	17.19	14.10	14.95	3.69	75.33%
7	S/C	13.70	13.65	8.13	3.45	57.57%
8	S/C	10.00	6.78	8.17	3.59	56.03%
9	S/C	51.90	12.75	6.65	2.59	61.07%
10	S/C	13.00	7.88	4.64	2.72	41.33%
11	14.88	21.25	11.29	10.44	3.52	66.26%
12	37.33	12.00	7.38	4.61	2.50	45.74%
13	25.00	22.50	11.44	12.67	3.26	74.29%
14	21.90	12.80	10.92	8.00	2.79	65.18%
15	20.25	28.00	9.56	11.79	3.74	68.27%
16	11.60	12.30	13.30	19.90	3.08	84.53%
17	16.40	17.10	11.64	10.71	3.64	66.03%
18	S/C	S/C	20.75	8.90	4.24	52.38%
19	15.50	16.80	15.50	10.56	3.37	68.09%
20	15.50	15.10	15.42	14.08	3.38	76.00%

S/C: Sin Computadoras

\* Indicador de naturaleza decreciente.

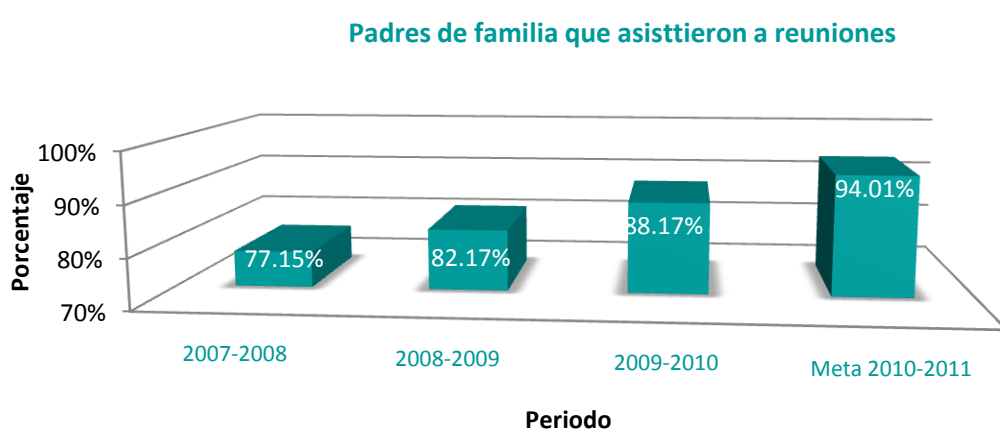
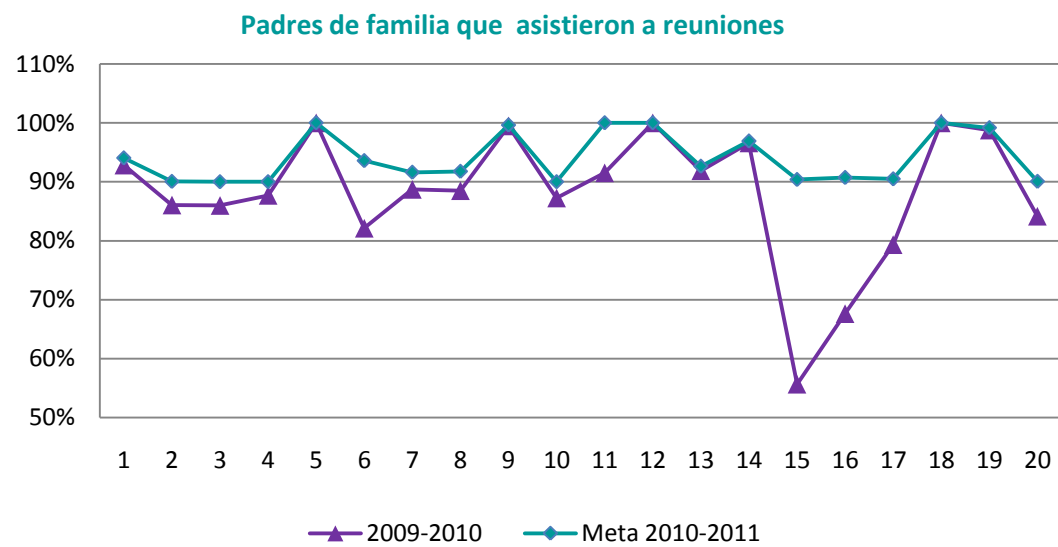




VIII.1.2. PADRES DE FAMILIA QUE ASISTEN A REUNIONES

Porcentaje de padres de familia que asistieron a las reuniones convocadas por el plantel en el ciclo escolar.

INDICADOR	$\left( \frac{Pf_t}{Pfc_t} \right) * 100$						
	Plantel	2006-2007	2007-2008	2008-2009	2009-2010 (A)	Meta 2010-2011 (B)	Porcentaje de incremento 2010-2011 (B - A) / (A)
<b>Global</b>		<b>77.15%</b>	<b>82.17%</b>	<b>88.17%</b>	<b>94.01%</b>	<b>94.01%</b>	<b>6.62%</b>
1		82.57%	85.13%	92.84%	94.04%	94.04%	1.30%
2		75.96%	81.46%	86.06%	90.06%	90.06%	4.64%
3		81.00%	84.97%	85.99%	90.00%	90.00%	4.66%
4		63.44%	86.43%	87.70%	90.00%	90.00%	2.62%
5		59.97%	84.66%	100.00%	100.00%	100.00%	0.00%
6		76.68%	79.00%	82.13%	93.58%	93.58%	13.95%
7		72.46%	81.17%	88.72%	91.61%	91.61%	3.26%
8		69.24%	84.44%	88.49%	91.76%	91.76%	3.70%
9		94.98%	93.64%	99.49%	99.62%	99.62%	0.14%
10		80.60%	83.11%	87.26%	90.00%	90.00%	3.14%
11		60.01%	100.00%	91.52%	100.00%	100.00%	9.27%
12		91.85%	92.24%	100.00%	100.00%	100.00%	0.00%
13		78.95%	88.35%	91.88%	92.63%	92.63%	0.82%
14		69.99%	94.92%	96.60%	96.90%	96.90%	0.32%
15		51.10%	51.89%	55.66%	90.38%	90.38%	62.37%
16		59.39%	55.38%	67.63%	90.72%	90.72%	34.14%
17		61.32%	70.34%	79.34%	90.48%	90.48%	14.05%
18		90.15%	71.15%	100.00%	100.00%	100.00%	0.00%
19		79.99%	81.92%	98.78%	99.17%	99.17%	0.40%
20		69.75%	71.50%	84.16%	90.06%	90.06%	7.01%



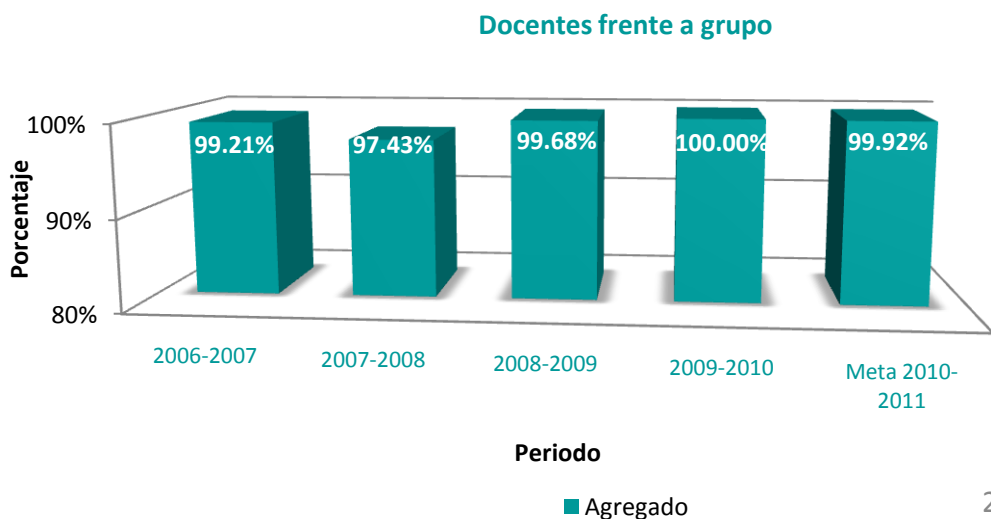
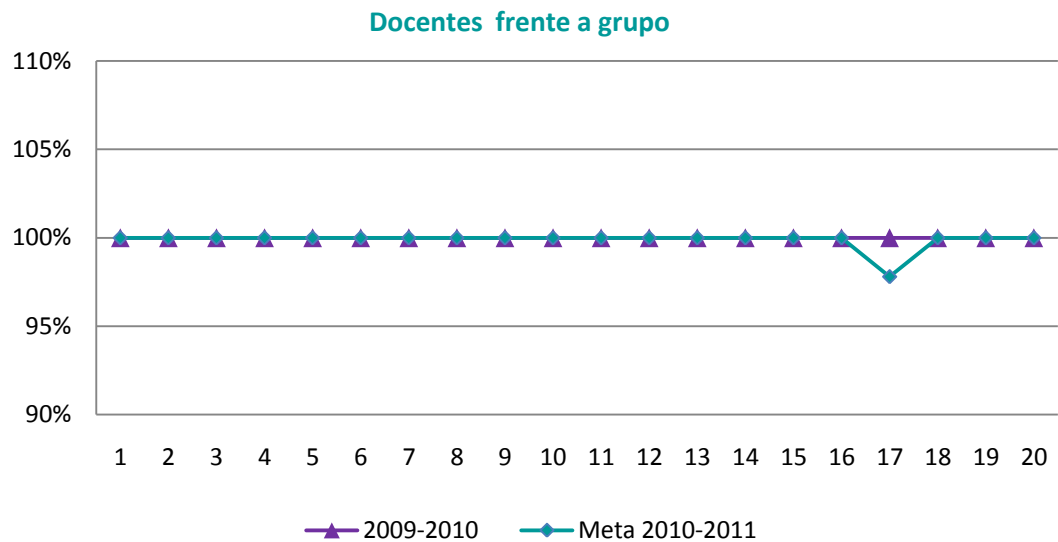
A partir del ciclo escolar 2007-2008 se redefinió la fórmula de cálculo del indicador.



VI.1.16. DOCENTES FRENTE A GRUPO

Porcentaje de docentes frente a grupo en el ciclo escolar.

INDICADOR	$\left(\frac{M_t^{doc}}{M_t}\right) * 100$						
	Plantel	2006-2007	2007-2008	2008-2009	2009-2010 (A)	Meta 2010-2011 (B)	Porcentaje de incremento 2010-2011 (B-A) / (A)
<b>Global</b>		<b>99.21%</b>	<b>97.43%</b>	<b>99.68%</b>	<b>100.00%</b>	<b>99.92%</b>	<b>-0.08%</b>
1		100.00%	100.00%	100.00%	100.00%	100.00%	0.00%
2		100.00%	95.65%	100.00%	100.00%	100.00%	0.00%
3		92.41%	88.82%	100.00%	100.00%	100.00%	0.00%
4		100.00%	100.00%	100.00%	100.00%	100.00%	0.00%
5		99.36%	98.35%	100.00%	100.00%	100.00%	0.00%
6		100.00%	100.00%	100.00%	100.00%	100.00%	0.00%
7		100.00%	100.00%	100.00%	100.00%	100.00%	0.00%
8		100.00%	100.00%	100.00%	100.00%	100.00%	0.00%
9		100.00%	100.00%	100.00%	100.00%	100.00%	0.00%
10		100.00%	100.00%	100.00%	100.00%	100.00%	0.00%
11		97.48%	100.00%	100.00%	100.00%	100.00%	0.00%
12		100.00%	100.00%	100.00%	100.00%	100.00%	0.00%
13		100.00%	100.00%	100.00%	100.00%	100.00%	0.00%
14		100.00%	100.00%	100.00%	100.00%	100.00%	0.00%
15		100.00%	100.00%	100.00%	100.00%	100.00%	0.00%
16		100.00%	100.00%	100.00%	100.00%	100.00%	0.00%
17		100.00%	73.68%	92.64%	100.00%	97.80%	-2.20%
18		100.00%	93.68%	98.19%	100.00%	100.00%	0.00%
19		98.71%	100.00%	100.00%	100.00%	100.00%	0.00%
20		100.00%	100.00%	100.00%	100.00%	100.00%	0.00%

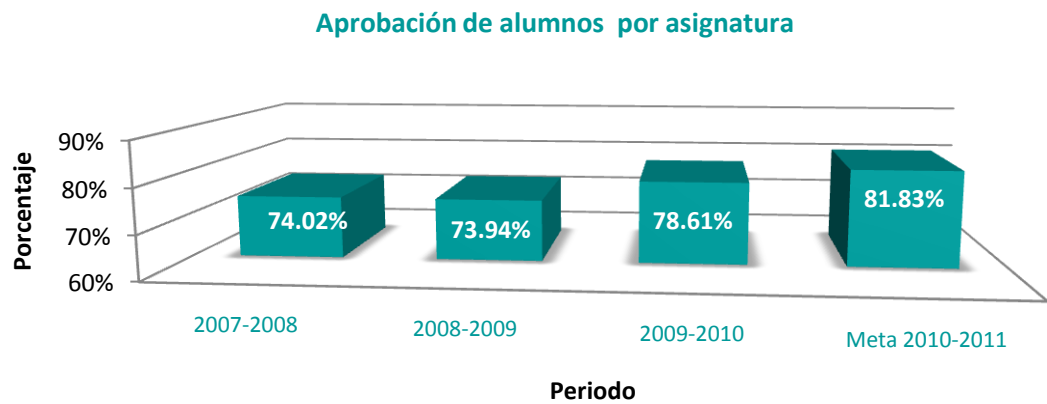
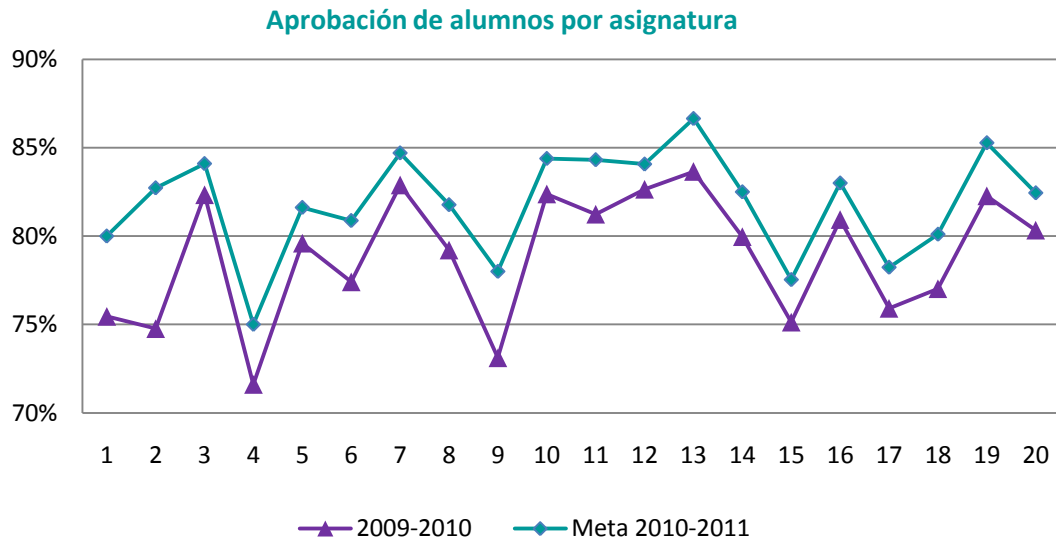




### II.2.11. APROBACIÓN DE ALUMNOS POR ASIGNATURA

Porcentaje de alumnos-asignatura que aprobaron en el ciclo escolar, con relación al número de alumnos-asignatura que se inscribieron al inicio del ciclo escolar.

INDICADOR	$\left(\frac{Aasa_t}{Aasi_t}\right) * 100$					
	Plantel	2006-2007	2007-2008	2008-2009	2009-2010 (A)	Meta 2010-2011 (B)
<b>Global</b>		<b>74.02%</b>	<b>73.94%</b>	<b>78.61%</b>	<b>81.83%</b>	<b>4.09%</b>
1		71.29%	72.36%	75.46%	80.00%	6.02%
2		70.38%	70.06%	74.77%	82.73%	10.65%
3		79.76%	78.50%	82.33%	84.10%	2.15%
4		69.29%	68.33%	71.61%	75.00%	4.73%
5		73.53%	73.14%	79.60%	81.62%	2.54%
6		73.73%	72.18%	77.41%	80.88%	4.48%
7		77.14%	78.57%	82.89%	84.70%	2.19%
8		71.53%	73.85%	79.21%	81.77%	3.24%
9		71.61%	71.15%	73.12%	78.00%	6.67%
10		74.84%	74.65%	82.38%	84.39%	2.44%
11		71.98%	71.26%	81.23%	84.32%	3.80%
12		80.64%	80.21%	82.64%	84.07%	1.73%
13		74.55%	76.05%	83.65%	86.65%	3.58%
14		74.13%	71.25%	79.97%	82.50%	3.17%
15		74.84%	75.62%	75.13%	77.54%	3.20%
16		75.92%	76.58%	80.93%	83.00%	2.56%
17		69.91%	71.83%	75.91%	78.23%	3.06%
18		66.55%	68.76%	77.02%	80.10%	4.00%
19		76.58%	75.62%	82.27%	85.28%	3.65%
20		79.16%	77.99%	80.33%	82.45%	2.63%

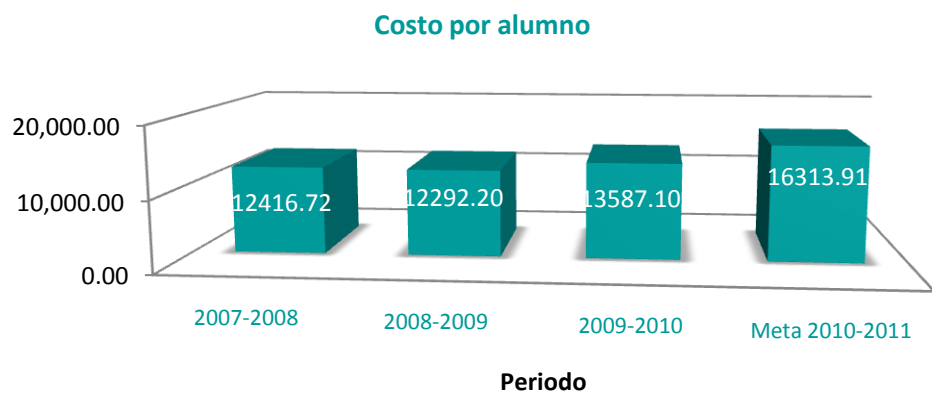
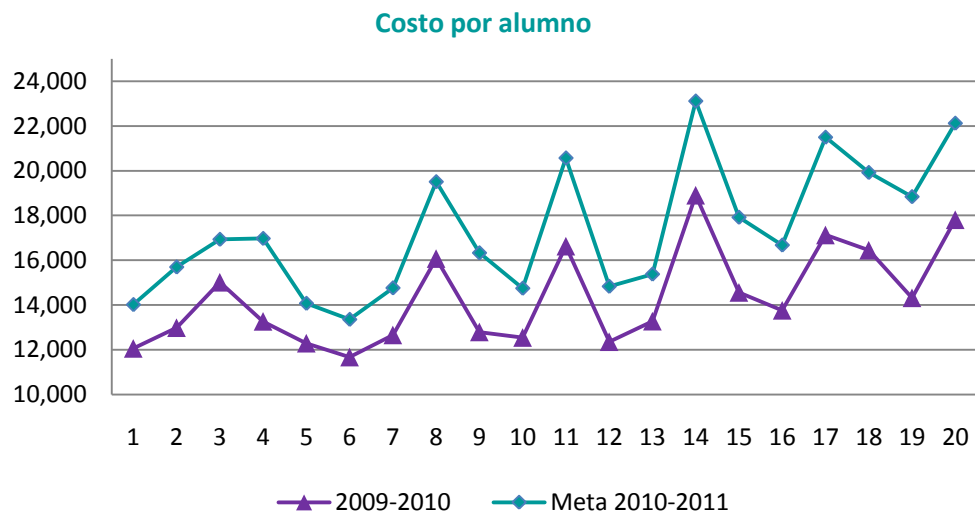




### II.5.1. COSTO POR ALUMNO

Es la relación del presupuesto ejercido por el plantel entre la matrícula total en el ciclo escolar.

INDICADOR	$\frac{pea_t}{AT_t}$					
	Plantel	2006-2007	2007-2008	2008-2009	2009-2010 (A)	Meta 2010-2011 (B)
<b>Global</b>		<b>12416.72</b>	<b>12292.20</b>	<b>13587.10</b>	<b>16313.91</b>	<b>20.07%</b>
1		12416.72	11270.46	12052.35	14017.62	16.31%
2		12416.72	12307.24	12980.53	15697.40	20.93%
3		12416.72	12792.20	15013.58	16934.68	12.80%
4		12416.72	11756.09	13263.80	16974.40	27.98%
5		12416.72	11989.07	12285.45	14072.65	14.55%
6		12416.72	10623.13	11664.78	13356.40	14.50%
7		12416.72	11495.64	12655.09	14763.79	16.66%
8		12416.72	13638.91	16074.40	19509.37	21.37%
9		12416.72	11499.96	12789.56	16330.15	27.68%
10		12416.72	12027.41	12540.88	14749.02	17.61%
11		12416.72	14512.43	16629.47	20570.88	23.70%
12		12416.72	12015.78	12352.12	14833.45	20.09%
13		12416.72	11260.70	13272.20	15378.80	15.87%
14		12416.72	17998.06	18910.38	23115.70	22.24%
15		12416.72	11811.35	14558.96	17919.15	23.08%
16		12416.72	12918.57	13757.76	16678.23	21.23%
17		12416.72	14664.89	17130.51	21496.97	25.49%
18		12416.72	15440.38	16449.26	19922.33	21.11%
19		12416.72	12859.19	14317.64	18841.80	31.60%
20		12416.72	13936.24	17813.34	22123.85	24.20%

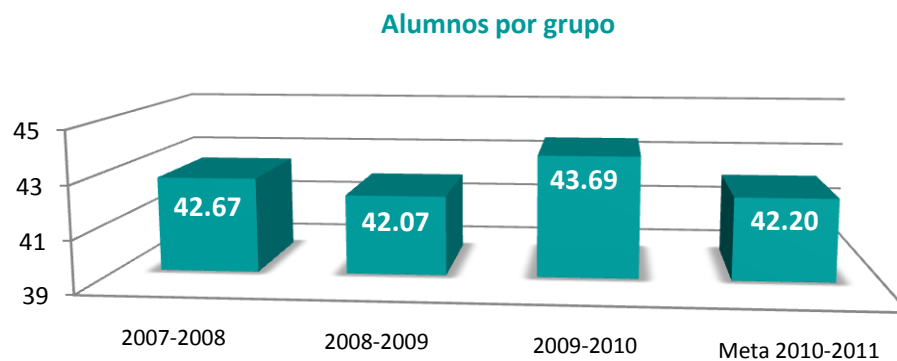
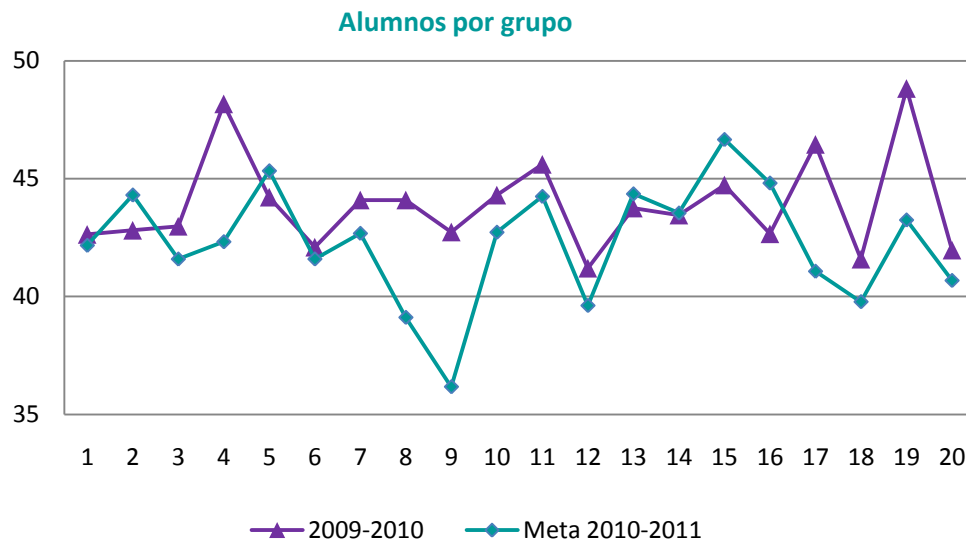




IV.2.7. ALUMNOS POR GRUPO\*

Promedio de alumnos por grupo en el plantel al inicio del ciclo escolar.

INDICADOR	$\frac{A_t}{Tg}$					
	Plantel	2006-2007	2007-2008	2008-2009	2009-2010 (A)	Meta 2010-2011 (B)
<b>Global</b>		<b>42.67</b>	<b>42.07</b>	<b>43.69</b>	<b>42.20</b>	<b>3.42%</b>
1		43.26	42.54	42.64	42.17	1.09%
2		40.77	40.46	42.81	44.31	-3.50%
3		39.48	42.00	42.98	41.59	3.24%
4		44.62	46.43	48.17	42.33	12.13%
5		39.94	39.84	44.22	45.34	-2.53%
6		44.16	42.24	42.10	41.59	1.19%
7		47.39	43.77	44.10	42.68	3.21%
8		43.16	43.50	44.10	39.11	11.30%
9		42.07	42.72	42.74	36.17	15.37%
10		43.83	40.99	44.30	42.73	3.56%
11		40.62	43.43	45.61	44.25	2.98%
12		41.52	39.08	41.21	39.62	3.85%
13		46.10	47.77	43.76	44.36	-1.38%
14		38.43	36.13	43.46	43.54	-0.20%
15		46.96	46.43	44.73	46.67	-4.33%
16		43.27	39.72	42.66	44.82	-5.05%
17		41.85	41.57	46.45	41.07	11.58%
18		43.04	38.00	41.59	39.78	4.35%
19		45.50	45.19	48.82	43.25	11.41%
20		38.70	39.47	41.97	40.68	3.08%



Indicador incorporado en la versión SEMS 2.0 a partir del ciclo escolar 2007-2008.

\* Indicador de naturaleza decreciente.

Periodo  
■ Agregado



## PRIORIDAD 23

### I.1.2. ATENCIÓN A LA DEMANDA

Porcentaje de alumnos que ingresaron al plantel educativo del total que solicitaron su ingreso en el ciclo escolar.

INDICADOR	$\left( \frac{A_t}{S_t} \right) * 100$						
	Plantel	2006-2007	2007-2008	2008-2009	2009-2010 (A)	Meta 2010-2011 (B)	Porcentaje de incremento 2010-2011 (B - A) / (A)
<b>Global</b>	<b>100.0%</b>	<b>100.0%</b>	<b>100.0%</b>	<b>100.0%</b>	<b>100.0%</b>	<b>100.0%</b>	<b>0.00%</b>
1	100.00%	100.00%	100.00%	100.00%	100.00%	100.00%	0.00%
2	100.00%	100.00%	100.00%	100.00%	100.00%	100.00%	0.00%
3	100.00%	100.00%	100.00%	100.00%	100.00%	100.00%	0.00%
4	100.00%	100.00%	100.00%	100.00%	100.00%	100.00%	0.00%
5	100.00%	100.00%	100.00%	100.00%	100.00%	100.00%	0.00%
6	100.00%	100.00%	100.00%	100.00%	100.00%	100.00%	0.00%
7	100.00%	100.00%	100.00%	100.00%	100.00%	100.00%	0.00%
8	100.00%	100.00%	100.00%	100.00%	100.00%	100.00%	0.00%
9	100.00%	100.00%	100.00%	100.00%	100.00%	100.00%	0.00%
10	100.00%	100.00%	100.00%	100.00%	100.00%	100.00%	0.00%
11	100.00%	100.00%	100.00%	100.00%	100.00%	100.00%	0.00%
12	100.00%	100.00%	100.00%	100.00%	100.00%	100.00%	0.00%
13	100.00%	100.00%	100.00%	100.00%	100.00%	100.00%	0.00%
14	100.00%	100.00%	100.00%	100.00%	100.00%	100.00%	0.00%
15	100.00%	100.00%	100.00%	100.00%	100.00%	100.00%	0.00%
16	100.00%	100.00%	100.00%	100.00%	100.00%	100.00%	0.00%
17	100.00%	100.00%	100.00%	100.00%	100.00%	100.00%	0.00%
18	100.00%	100.00%	100.00%	100.00%	100.00%	100.00%	0.00%
19	100.00%	100.00%	100.00%	100.00%	100.00%	100.00%	0.00%
20	100.00%	100.00%	100.00%	100.00%	100.00%	100.00%	0.00%

